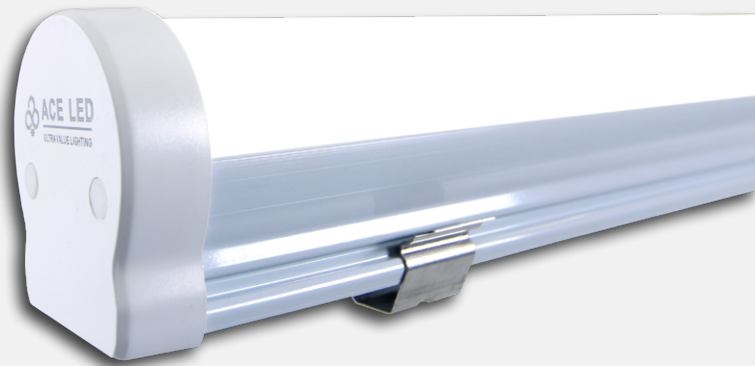


PROJECT NAME		DATE	
CAT. NUMBER			
NOTES			

SPEC SHEET

Ace Wet-Rated Strip (WS1)

LINEAR LED FIXTURE



KEY FEATURES

- 3,500 to 5,700 lumens
- Up to 160 LPW
- IP65 rated
- Estimated life >100,000 hours
- Frosted polycarbonate lens
- Stainless steel brackets
- Includes 6' SO cord



Washdown & Wet Location

Design and construction keeps out moisture, bugs, dirt and water. IP65 rated enclosure, suitable for both wet and dry locations.



Slim Design

Lightweight, extruded plastic housing with an internal driver made by Ace LED and a white 6' SO cord.



NSF Certified

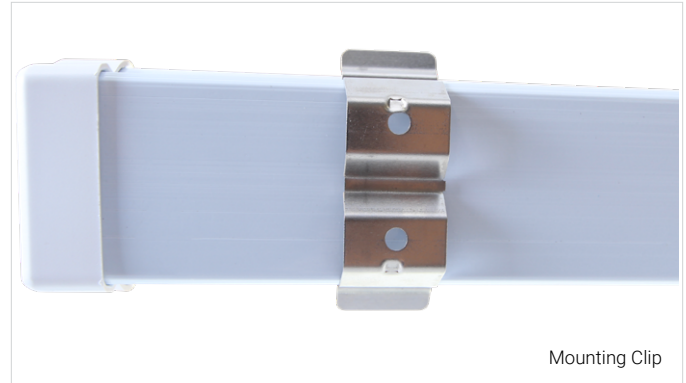
Certified for food and beverage processing, cold storage, non-corrosive chemical plants, wine cellars and more, at an affordable cost.



FEATURES & SPECIFICATIONS

CONSTRUCTION

- **Housing:** Light-weight, extruded plastic housing.
- **Brackets:** Stainless steel (one pair included).
- **Materials:** Glass-free. Mercury-free.
- **Cord:** 6' SO cord installed, black and white color available.
- **LED Boards:** Made of aluminum core to maximize thermal dissipation of the LEDs.
- **LEDs:** Only high quality LEDs are used to deliver maximum light output and longevity.



ELECTRICAL

- **Power Input:** 120-277V (50/60Hz).
- **Power Factor:** >0.99 (0.99 typical).
- **Total Harmonic Distortion:** <10%.



OPERATION

- **Environment:** Washdown and wet locations. IP65 rated. NSF certified. Interior applications only.
- **Ambient Range Operation:** -40°C up to 50°C (-40°F up to 120°F).

OPTICS

- **CCT:** 4100K and 5000K standard.
- **CRI:** >80.
- **Lenses:** High-impact, frosted polycarbonate lens reduces glare.

MOUNTING

- **Mounting:** Stainless steel mounting clips.

WARRANTY

- **Standard:** 5-year product warranty covers fixture and LED driver.

LISTINGS & CERTIFICATIONS

- UL 1598.
- IP65.
- NSF certified.
- RoHS compliant.
- cUL.



TECHNICAL SPECS

LUMEN OUTPUT	EFFICACY	WATTS	PART NUMBER
3,518	160	22	AL-WS1-IP65-4-50K-22W-W
5,729	159	36	AL-WS1-IP65-4-50K-36W-W

Typical lumen output (±10%) at 120V (LV) under 25°C ambient temperature at 5000K.

Lumen Multipliers

Allows to calculate the actual lumen output for your application.

COLOR TEMP	
CCT	Multiplier
5000	1.000
4100	1.000
3500	0.920

Example: How to calculate the actual lumen output of the 5,729 model at 3500K.

- 1) Find the lumens from the lumen output column.
- 2) Apply all the corresponding multipliers.

$$\begin{array}{ccccccc}
 5,729 & \times & 0.920 & = & 5,271 \\
 \text{Nominal lumens} & & \text{CCT} & & \text{Actual lumens}
 \end{array}$$

ORDERING

MODEL	LENGTH	CCT	WATTAGE	CORD
AL-WS1-IP65	4	50K 5000K 41K 4100K Other CCT available upon request with extended lead time.	22W 36W Other wattage options available upon request with extended lead time.	[BLANK] 6' black SO cord out of end. Only available for 22W. W 6' white SO cord out of end

ORDERING EXAMPLES

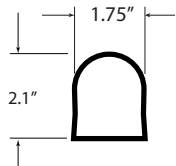
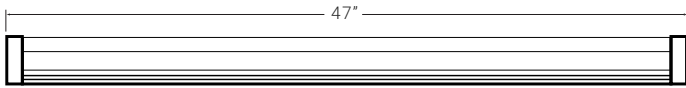
AL-WS1-IP65-4-50K-22W (includes BLACK cord)

AL-WS1-IP65-4-50K-22W-W (includes WHITE cord)

DIMENSIONS & DRAWINGS

DIMENSIONS

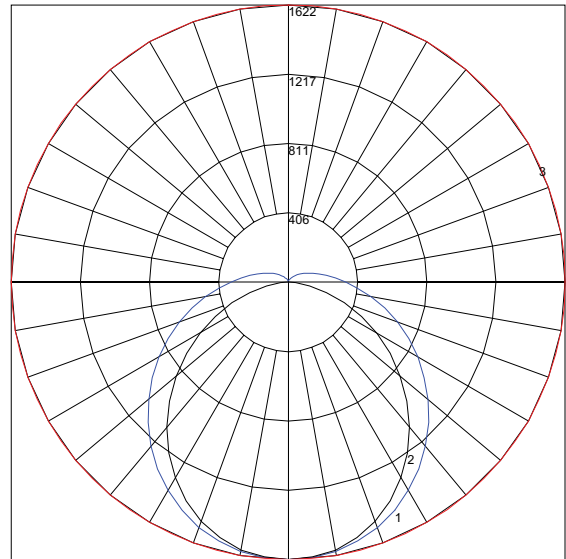
Length (in)	Width (in)	Height (in)	Weight (lb)
47	1.75	2.1	>2



LIGHT DISTRIBUTION

FROSTED LENS

Polar Graph
AL-WS1-IP65-4-50K-36W-W



Maximum Candela: 1622

Located at horizontal angle: 0, Vertical angle : 0

#1: Vertical plane through horizontal angles (0-180)(through max Cd.)

#2: Vertical plane through horizontal angles (90-270)

#3: Horizontal cone through vertical angle (0)(through max Cd.)

[Download IES Files](#)

Linmore LED Labs, Inc.

2360 S. Orange Ave, Fresno, CA 93725

559.485.6010 | info@linmoreled.com | LinmoreLED.com



All specifications are subject to change without notice. Please visit linmoreled.com for latest information. All values are typical or design values and series averages. Actual performance may differ as a result of end-user environments and applications. Consult Linmore LED with specific inquiries. Copyright © 2024, Linmore LED Labs, Inc. All rights reserved. No part of this document may be reproduced in any form without the prior written permission of Linmore LED.

Updated: 2024.01.24