

ULPLUS-GW-TS7-R

UltraLink+ 7" Touchscreen with Gateway, Recessed Mount



The ULPLUS-GW-TS7-R is a 7" Touchscreen with a Bluetooth NLC Wireless Gateway for recessed wall mounting. It provides an intuitive user interface for local and remote control of the entire Bluetooth Mesh network. The device supports lighting control, including on/off, dimming, CCT, color tuning, scenes, and air quality monitoring. Users can customize the display with favorites, groups, or area-based controls, and adjust settings like brightness, screensaver, light/dark mode, and password protection. Optional BACnet integration enables seamless compatibility with building automation systems.

TECHNICAL SPECIFICATIONS¹

- **Display:** 1024x600, IPS 170° Full Wide View Angle.
- **Wall Plate:** Polycarbonate, Available in Black or White Color.
- **Mounting Method:** Wall spring-mounted.
- **Processor:** Broadcom BCM2711, Quad-Core Cortex-A72 (ARM v8) 64-Bit SoC @ 1.5GHz.
- **Connectivity:** 2.4 GHz and 5.0 GHz IEEE 802.11ac Wi-Fi, Bluetooth 5.0, BLE, Gigabit Ethernet.
- **Input Power:** 5V DC, 2A.
- **Protection:** Short circuit, overcurrent, over temperature.
- **Wiring:** 1.5m 18 AWG captive cable with USB-C output.
- **Operating Temperature Range:** 0°C to +50°C (32°F to +122°F).
- **Max Bluetooth Range:** 200ft (60m) line of sight.

LISTINGS

- FCC, DLC, RoHS.
- Conforms with DLC NLC5 Cybersecurity Standards.

FEATURES

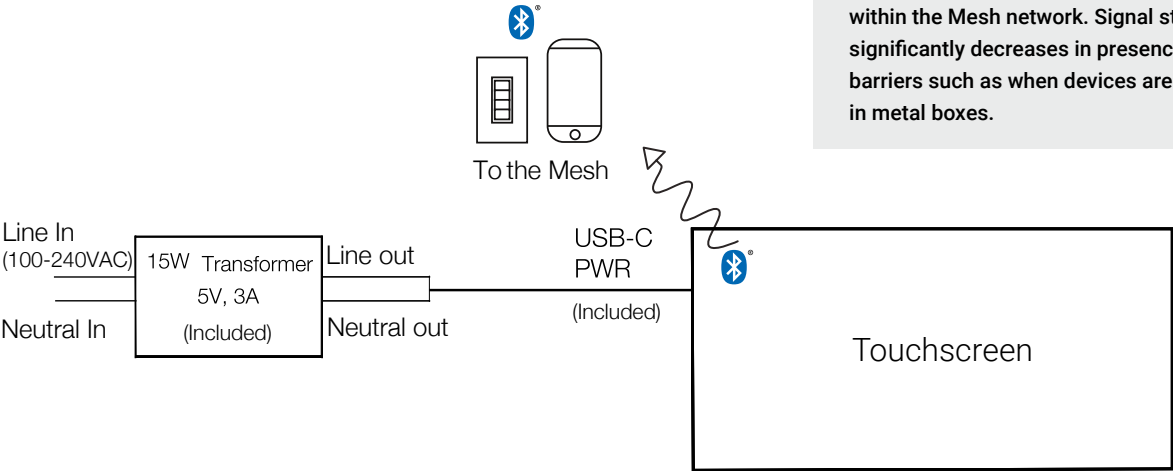
- Touchscreen configuration: settings, brightness, screensaver, light/dark mode, password lock.
- Display configuration: favorites, groups/area controls.
- Gateway between various protocols and the BubblyNet Bluetooth Mesh ecosystem.
- Network access from remote location for debugging and configuration of the Bluetooth Mesh network (requires Ethernet or Wi-Fi connectivity).
- Local control of the network.
- Sensor data collection and analysis.
- Control: Scenes, on/off, intensity, CCT, HSL (full color), air quality values.
- BACnet control (requires BACnet Software Package).
- Suitable for indoor use.
- Mobile app available for iOS and Android devices.



ORDERING

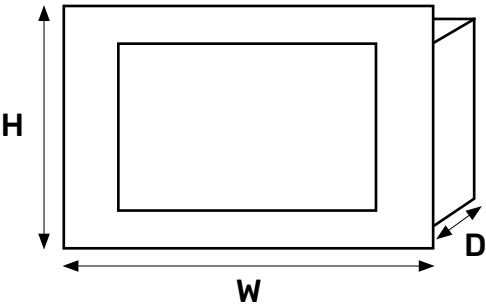
Part Number	Description
ULPLUS-GW-TS7-R-BK	UltraLink+ 7" Touchscreen with Bluetooth NLC Wireless Gateway, Recessed Wall Mount, Black Color, BubblyNet Firmware. Field installed.
ULPLUS-GW-TS7-R-WH	UltraLink+ 7" Touchscreen with Bluetooth NLC Wireless Gateway, Recessed Wall Mount, White Color, BubblyNet Firmware. Field installed.

CONNECTION DIAGRAM



DIMENSIONS

	Height	Width	Depth
Touchscreen	5.4"	8.2"	1.7"
Cutout	4.8"	7.3"	N/A



FOOTNOTES

1. The performance of this product is influenced by various factors beyond Linmore LED’s control, including but not limited to environmental conditions, user settings, and proper maintenance. While we provide detailed specifications and guidelines to help optimize performance, we cannot guarantee or be held liable for its performance under any particular circumstance(s). Customers are advised to test the products in their specific application environments to ensure suitability for their intended use.

Updated: 2025/07/19