



SITE LIGHTER (SLW2) INSTALLATION INSTRUCTIONS

These instructions do not purport to cover all details or variations in components nor to provide for every possible contingency to be met in connection with installation, operation, or maintenance.

Should further information be desired or should a particular problem arise which is not covered sufficiently for the purchaser's purpose, the matter should be referred to Linmore LED Labs.

Linmore does not claim liability for any installation not performed according to this guide or not by a qualified electrician.

READ AND FOLLOW ALL SAFETY INSTRUCTIONS SAVE THESE INSTRUCTIONS FOR FUTURE REFERENCE

When using electrical equipment, basic safety precautions should always be followed including the following:

1. **DANGER – RISK OF SHOCK – DISCONNECT POWER BEFORE INSTALLATION**
2. **WARNING** – Risk of fire or electric shock. Installation requires knowledge of luminaires electrical systems. If not qualified, do not attempt installation. Product must be installed in accordance with NEC or your local electrical code. If you are not familiar with these codes and requirements, contact a qualified electrician.
3. **WARNING** – Risk of fire or electric shock. Wiring and electrical parts may be damaged when drilling for installation of the LED luminaire. Check for enclosed wiring and components.
4. **WARNING** – Risk of fire or electric shock. Check the existing wiring for damage before installing. Do not install if existing wires are damaged.
5. **WARNING** – To prevent wiring damage or abrasion, do not expose wires to the edge of sheet metal or any other sharp objects.
6. Only the holes indicated in the photographs or drawings may be made or altered as a result of the kit installation. Do not leave any other holes open in a wiring enclosure or electrical component.
7. Thoroughly inspect luminaire for any freight damage upon receipt. All damage should be reported to the delivery carrier.
8. Confirm electricity has been de-energized to disconnect existing fixture from circuit and carefully unbolt and remove from wall if applicable.

MECHANICAL INSTALLATION

Wall Mount (WM)

Tools required:

1. Philips screwdriver for securing the wall mount box to the plate.
2. Appropriate load rated hardware and tool(s) for securing the plate to the junction box or wall surface.



Installation steps:

Step 1: Remove the wall plate from the mount box by loosening the two M6 screws on the bottom and pulling the plate down and away from the box.

Step 2: Peel the liner on the plate gasket and stick it to the wall plate. Ensure the holes are aligned and the arrows on the gasket are towards the top end of the wall plate with the slot.

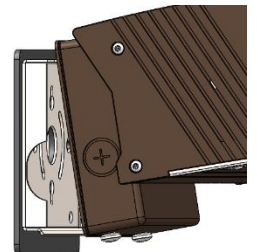
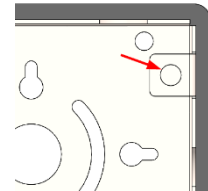
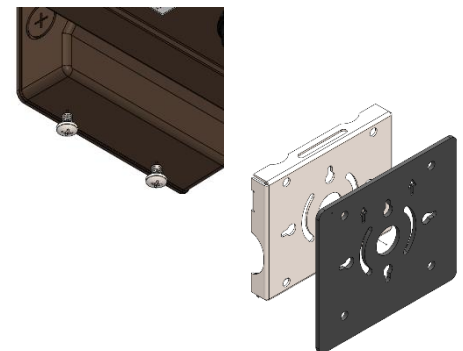
Step 3: Route the power wires through the center opening and attach the gasketed wall plate to the junction box or wall with appropriate hardware and secure as required.

Step 4: Raise the fixture close to the plate and snap the tether to the top right hole on the wall plate. This will hold the fixture in place while the wiring is completed.

Step 5: Complete the wiring as instructed in the Electrical Installation section.

Step 6: Tuck or loop the wires and tether back into the junction box and hang the fixture onto the wall plate. Ensure the tab on the box is engaged with the slot on the top of the wall plate and lower the fixture to compress the gasket.

Step 7: Tighten the two M6 screws on the bottom to lock the box onto the wall plate.



Notes:

- Stainless steel hardware is recommended for mounting.
- Trim power cord length as needed.
- Wet location wire connectors are recommended.

MECHANICAL INSTALLATION

Trunnion Mount (TM)

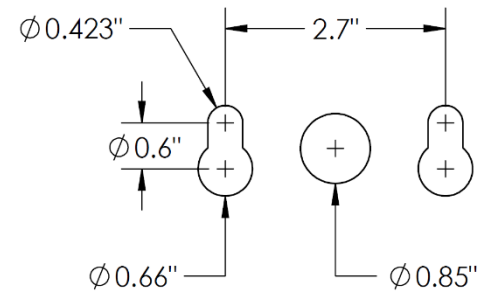
Tools required:

1. 6mm hex driver or Allen wrench for M8 screws on trunnion mount swivel.
2. 4mm hex driver or Allen wrench for M6 screws for angle adjustment.
3. Appropriate load rated hardware and tool(s) for securing the trunnion mount to wall surface.



Installation steps:

- Step 1:** Install the mounting hardware to the wall surface with the keyhole dimensions provided. Ensure the installation is kept level.
- Step 2:** Install the fixture on the hardware and tighten to the recommended torque specification of the hardware.
- Step 3:** Complete the wiring as instructed in the Electrical Installation section.
Wiring will be terminated at a separate exterior junction box.



Notes:

- Stainless steel hardware is recommended for mounting.
- Trim power cord length as needed.
- Wet location wire connectors are recommended.

ELECTRICAL INSTALLATION

Step 1: Confirm electricity has been de-energized.

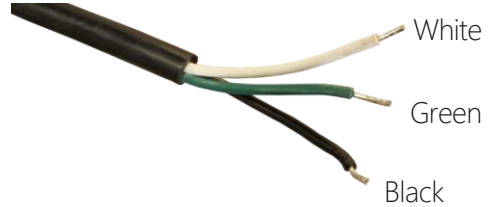
Step 2: Install the fixture by following the Mechanical Installation instructions and connect to circuit.

The power cord comes with:

A **white** neutral wire.

A **green** ground wire.

A **black** line voltage for either 120-277V or 347-480V



Notes:

- Always verify voltage at site
- Wet location wire connectors are recommended.