

PROJECT NAME		DATE	
CAT. NUMBER			
NOTES			

SPEC SHEET

Site Lighter Area Light (SL2)

Sleek by design. Built for precision, durability, and lasting performance.



Certified by DarkSky.org



HiOptiX®



IP65



IK08



up to
20kV



0-10V

Projected L90 up to 173,000 hours

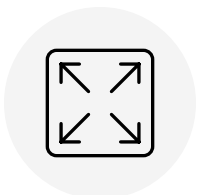
KEY FEATURES

- 8,000 to 120,000 Lumens
- Up to 176 LPW
- Up to 55°C²
- Industry-leading 5G Vibration Rating³
- Extruded Aluminum Body
- Easy Access to Power Supply



Guaranteed Performance

Performance of the light fixture is guaranteed for 10 years, including lumen output (L70), color temperature, and LED driver.



HiOptiX® Lens

Proprietary HiOptiX lens technology delivers light precisely where needed for superior illumination efficiency and uniformity.



EZ-Connect™ Receptacle

The simplest and fastest way to add sensors and UltraLink wireless controls at any time in the field. Twist Lock system, no tools or wiring needed.

FEATURES & SPECIFICATIONS

CONSTRUCTION

- **Extruded Aluminum Body:** Improves heat dissipation for longer life.
- **Heavy-Duty Powder Coating:** Bronze, white and black standard. Custom color options available⁴.
- **Unified Design:** Same modern design as Site Lighter Wall Pack (SLW2) for unified aesthetics.
- **Power Supply Access:** Wireway cover allows easy access to driver and wiring for quick maintenance and fixture upgrades in the field.
- **EZ-Connect™ Receptacle:** The simplest and fastest way to add sensors and wireless controls at any time on the field. Twist and Lock system, no tools or wiring needed.

ELECTRICAL

- **Power Input:** 120-277VAC or 277-480VAC, depending on model.
- **Power Factor:** 0.99 typical.
- **Total Harmonic Distortion:** <20%.
- **Surge Protection:** Standard is 6kV for drivers. Additional surge protection available as an option: SRG20 option is 20kV/20kA, SRGXT option passed ANSI C136.2-2018 surge test for extreme level surge conditions (40 strikes at 20kV/20kA for LV and 20kV/18kA for HV).

OPERATION

- **Environment:** IP65 rated for exterior applications.
- **Ambient Range Operation:** -40°C up to 55°C (-40°F up to 130°F), except XXL housing size which can withstand up to 50°C (122°F).

OPTICS

- **CCT:** 4000K and 5000K standard. 3500K, DarkSky⁵ options (1900K, 2200K, 2700K, 3000K) available upon request (extended lead time).
- **CRI:** >70 standard, other CRI available (extended lead time).
- **Lenses:** Polycarbonate lens with our proprietary HiOptiX[®] technology, designed for superior uniformity and illumination efficiency by delivering the light precisely where it is needed. Optics available:
 - Type 2, Type 3, Type 4, Type 5, Type 5 Wide.
 - Front Row: Automotive (AFR), Left (FRL), Right (FRR).
 - Flood: 35 degrees (F35), 60 degrees (F60).
 - Forward Throw Medium (TFTM).
- SL2 HiOptiX[™] lenses are made from high-clarity optical-grade polycarbonate resin that meets or exceeds the performance of top tier silicone lenses. They are UL-rated for flame retardance (UL 94) and certified for UV and water resistance per UL 746C.



MOUNTING

- **Mounting:** Rapid Mount Bracket, Slip Fitter (Knuckle Adapter), Straight Arm⁵, Trunnion⁷ (Yoke), and Wall Mount^{5,8} options available. DarkSky approved with Straight Arm and Wall Mount options only.
- **Note:** Installation of multiple LG or XL fixtures on the same pole requires Pole Spacers (A30-###), see mounting accessories (pg.13).

CONTROLS¹

- **Dimming:** 0-10V standard. Dimming range 100% to 10% and then Off.
- **Photocell Sensor:** On/Off based on ambient light. EZ-Connect[™] Twist Lock system for field installation.
- **Occupancy Sensors:** PIR and Microwave occupancy sensors, On/Off/Dim. EZ-Connect[™] Twist Lock system for field installation.
- **Networked Lighting Controls:** UltraLink Wireless Controls with Bluetooth[®] NLC Mesh technology. EZ-Connect[™] Twist Lock system for field installation.

WARRANTY

- **10 Year Performance Warranty:** Fixture is guaranteed for 10 years, including lumen maintenance (L70), color temperature, and LED driver. "Defective" is considered if ten percent (10%) or more of the LEDs, per product, are non-operating LEDs, total lumen depreciation exceeds 30% (L70), or color temperature has shifted more than 500° Kelvin within the warranty period. See terms and conditions at <https://linmoreled.com/warranty>

LISTINGS & CERTIFICATIONS

- ETL Listed (UL 1598, CSA STD C22.2 #250.0)
- IP65.
- RoHS Compliant.
- BAA/TAA Compliant.
- FCC CFR 47 Part 15.
- ANSI C136.2-2018 Extreme Surge Exposure Level for Roadway and Area Lighting Equipment.
- ANSI C136.31-2023 5G Vibration Rated⁹ for Roadway and Area Lighting Equipment.
- DarkSky Compliant⁵.
- DesignLights[™] Consortium Premium¹⁰.

TECHNICAL SPECS

Size	Watts	MODEL	LUMENS										
			T2	T3	T4	T5	T5W	AFR	FRL	FRR	F35	F60	TFTM
SM	56	SL2-A1-08K-SM	9,133	8,288	8,934	9,390	9,651	8,992	8,934	8,918	9,291	8,371	8,868
SM	84	SL2-A1-12K-SM	13,592	12,334	13,296	13,974	14,363	13,382	13,296	13,271	13,826	12,457	13,197
SM	108	SL2-A1-15K-SM	16,680	15,136	16,317	17,149	17,625	16,423	16,317	16,286	16,967	15,287	16,196
SM	133	SL2-A1-18K-SM	19,872	18,033	19,440	20,431	20,999	19,566	19,440	19,404	20,215	18,213	19,295
MD	143	SL2-A1-21K-MD	23,464	21,292	22,953	24,124	24,794	23,102	22,953	22,910	23,868	21,505	22,782
MD	161	SL2-A1-24K-MD	26,712	24,240	26,131	27,464	28,227	26,300	26,131	26,082	27,173	24,482	25,937
MD	209	SL2-A1-30K-MD	33,277	30,197	32,552	34,213	35,163	32,764	32,552	32,492	33,851	30,499	32,311
MD	226	SL2-A1-32K-MD	34,917	31,685	34,156	35,899	36,896	34,378	34,156	34,093	35,519	32,002	33,903
LG	255	SL2-A1-38K-LG	42,014	38,125	41,099	43,196	44,396	41,366	41,099	41,023	42,738	38,506	40,794
LG	322	SL2-A1-46K-LG	50,919	46,206	49,810	52,351	53,805	50,134	49,810	49,718	51,797	46,668	49,440
LG	374	SL2-A1-52K-LG	58,099	52,721	56,833	59,733	61,392	57,202	56,833	56,728	59,100	53,248	56,411
XL	435	SL2-A1-62K-XL	68,689	62,331	67,193	70,621	72,582	67,629	67,193	67,068	69,873	62,954	66,694
XL	510	SL2-A1-71K-XL	78,997	71,685	77,276	81,219	83,475	77,778	77,276	77,133	80,359	72,402	76,703
XXL	765	SL2-A1-105K-XXL	117,577	106,694	115,016	120,884	124,242	115,763	115,016	114,803	119,604	107,761	114,163

Typical lumen output (±10%) at 120V (LV) under 25°C ambient temperature at 5000K.

Lumen Multipliers

Allows to calculate the actual lumen output for your application.

CCT	5000K	4000K	3500K	3000K	2700K	2200K	1900K
Multiplier	1.000	0.990	0.983	0.953	0.927	0.859	Contact Factory

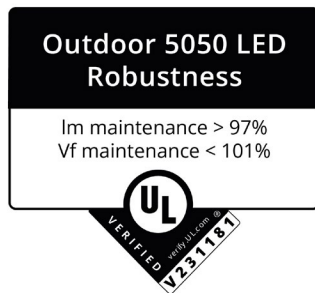
LUMEN MAINTENANCE

Lumen Maintenance, also known as L70, is a lifetime measurement criteria developed by IESNA (Illuminating Engineering Society of North America) to evaluate the useful lifetime of an LED fixture in terms of the expected number of operating hours until the light output has diminished to 70% of initial levels. An LED fixture is considered to have reached its rated life when it emits 30% less light than it initially did. All values below are calculated in accordance to IESNA standards, per TM-21.

Ambient Temp.		SL2		
°C	°F	L90	L80	L70
25	77	173Khrs	372Khrs	598Khrs
35	95	156Khrs	335Khrs	539Khrs
45	113	124Khrs	273Khrs	442Khrs
55	131	94Khrs	207Khrs	335Khrs

Lxx = Calculated time to reach xx% of initial lumen output.

Reported Life (6X)	
Tested Time	Extrapolated
17,000 hrs	> 102,000 hrs



LEDs have been Tested and Verified by UL for High Robustness

- **Salt-fog protection** per IEC 60068-2-52 (NaCl 5% / 35°C salt water sprayed for 2 hours » 40°C / 93% left for 6 days and 22 hours, 4 cycles).
- **Sulfur protection** per IEC 60068-2-43 (25°C, 75% R.H., H₂S 15ppm, 504 hours).
- **High humidity protection** per JESD22-A101D.01 (85°C / 85%, 640mA, ON/OFF 0.5 hours, 1,000 hours).
- **Thermal Shock** per JESD22-A106B.02 (-45°C to +125°C / 15min / 500 cycles).

FIXTURE MAINTENANCE

Easy Access to Power Supply

The wireway cover provides easy access to the driver and wiring, making maintenance quick and simple.

This feature not only lowers maintenance costs but also ensures that your fixture can be updated with the latest technologies, including advanced controls and surge protectors.



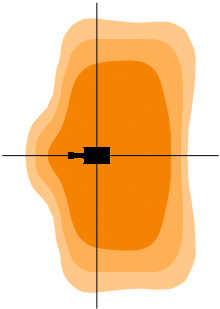
LIGHT DISTRIBUTION



Proprietary HiOptiX lens technology delivers light precisely where needed for superior illumination efficiency and uniformity.

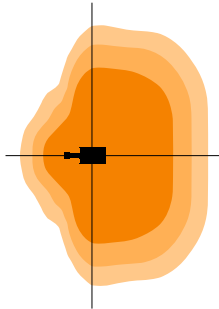
T2

Type II



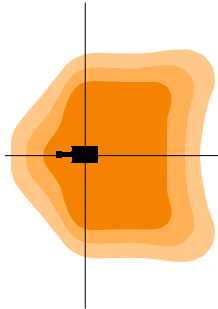
T3

Type III



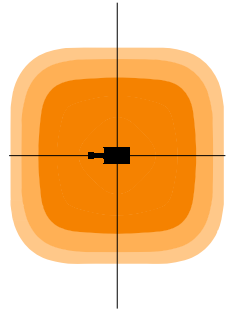
T4

Type IV



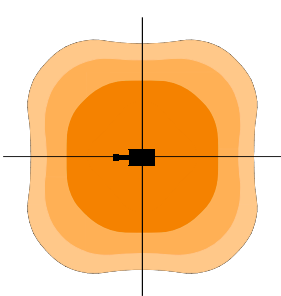
T5

Type V



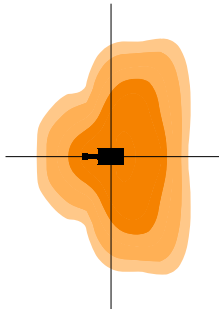
T5W

Type V Wide



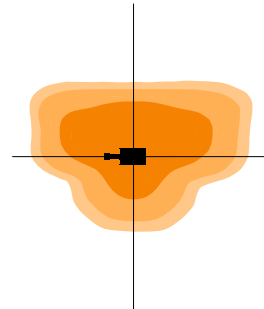
AFR

Automotive Front Row



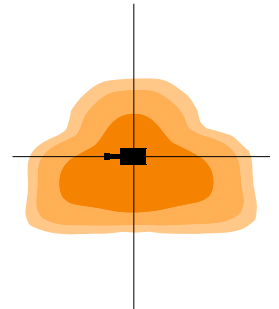
FRL

Front Row Left



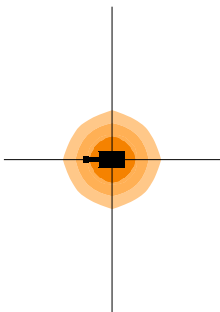
FRR

Front Row Right



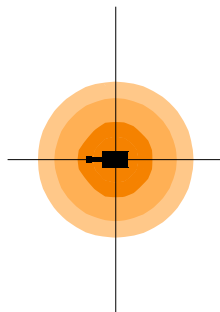
F35

Flood 35 degrees



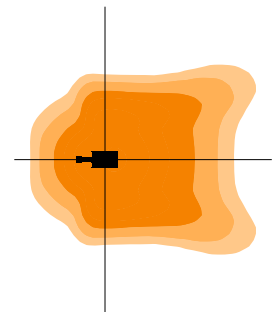
F60

Flood 60 degrees



TFTM

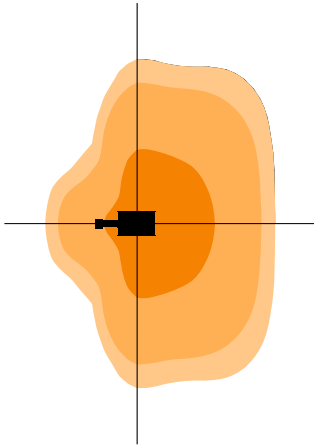
Forward Throw Medium



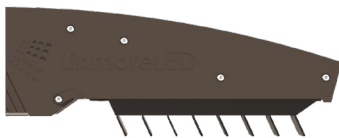
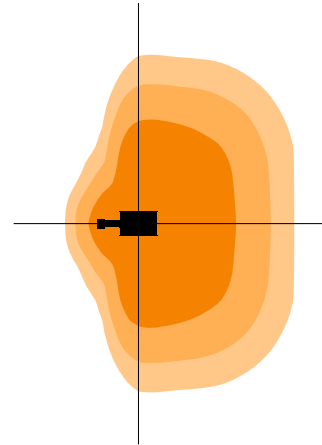
GLARE SHIELDS



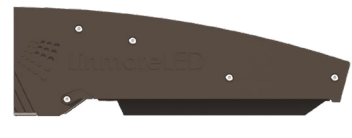
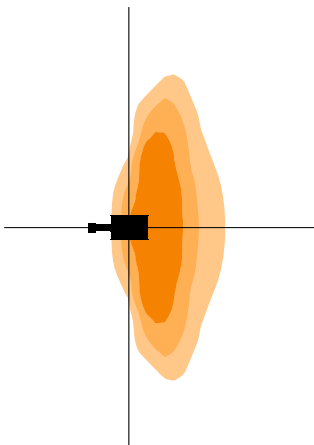
No BLS
Type III Optic



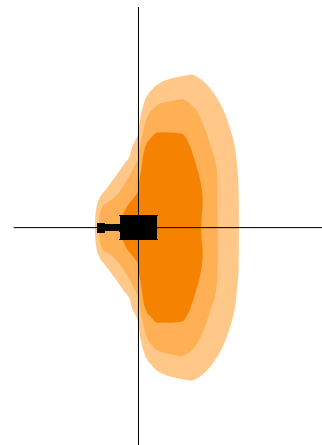
GSB
Type III Optic



BLS
Type III Optic



BLS Low Cutoff
Type III Optic



GSB = Black Glare Shield.
BLS = Back Light Glare Shield (not available for T4 optics).

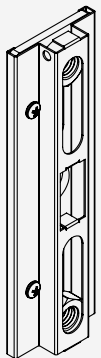
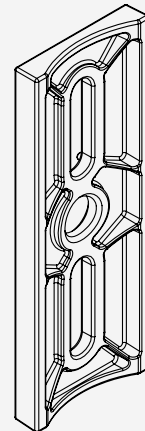
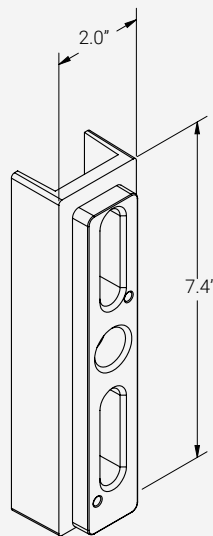
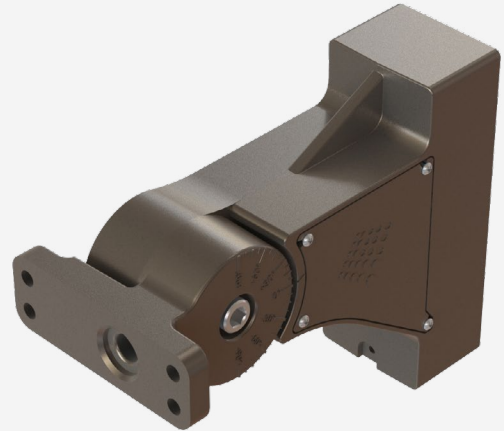
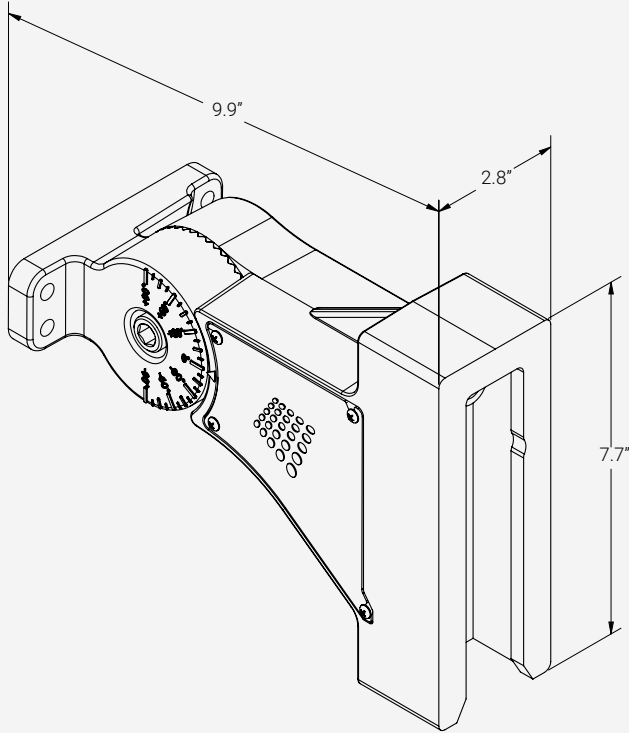
Glare shields must be ordered separately as an accessory for field installation. All glare shields are matte black to suppress reflections and ensure consistent optical performance. Other colors are not available, as they may cause unwanted reflections and alter the designed light distribution pattern.

MOUNTING OPTIONS

RMB

Rapid Mount Bracket

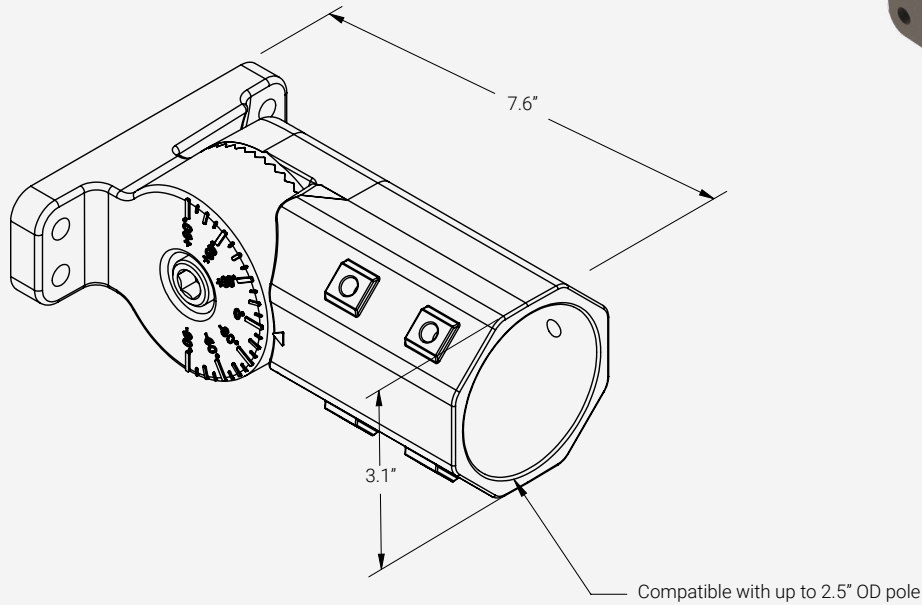
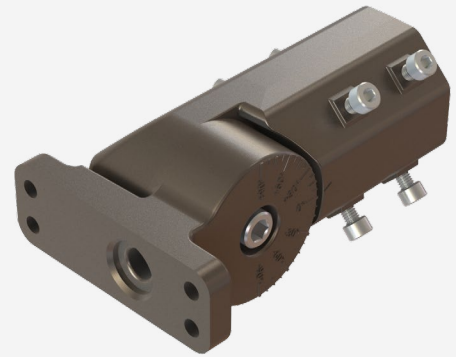
Universal bracket to install SL2 fixtures to round or square poles without having to drill new holes in most cases, cutting installation time in half. Accommodates a single fixture.



SF

Slip Fitter Bracket

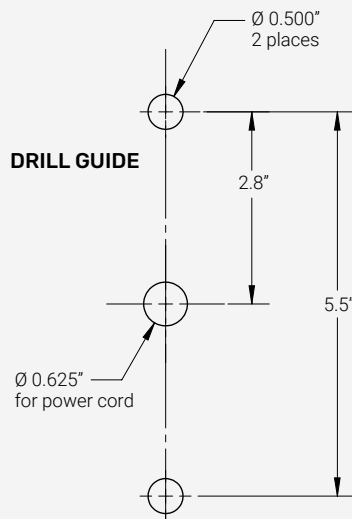
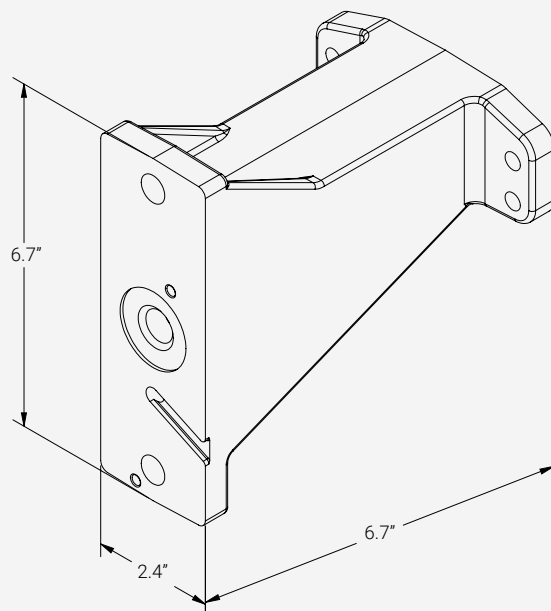
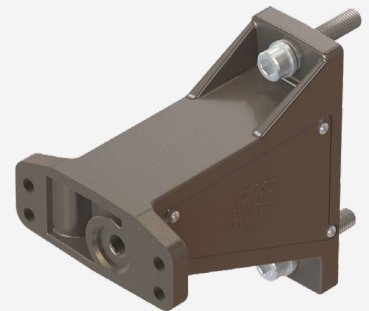
Adapter with adjustable angle for vertical and horizontal applications. Accommodates a single fixture to round pipes with no greater than 2.5" outer diameter.



SA

Straight Arm Bracket

For fixed horizontal applications only. Accommodates a single fixture.



⚠ When installing multiple LG or XL fixtures on the same pole.

Pole Spacers required (sold separately).

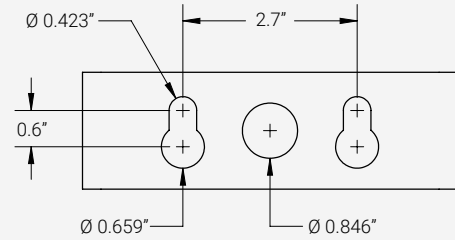
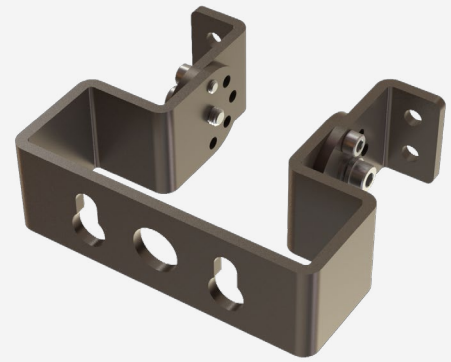
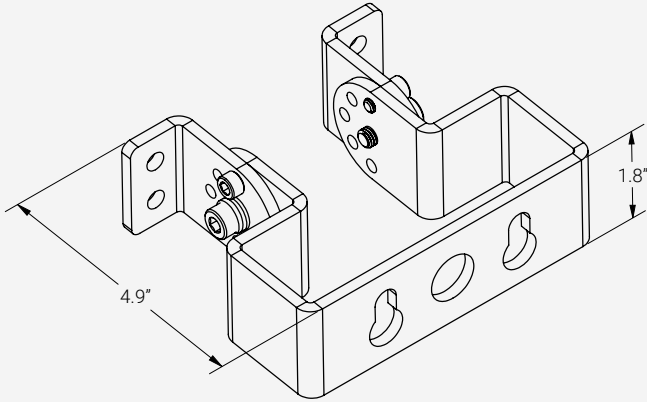


Pole Spacer
P/N: A30-###

TM

Trunion Mount Bracket

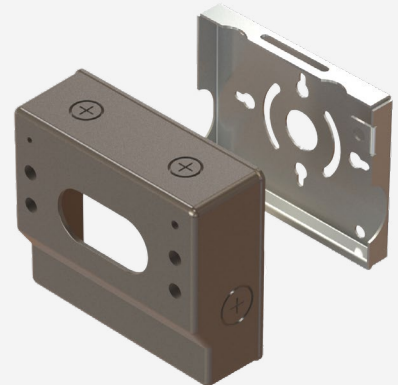
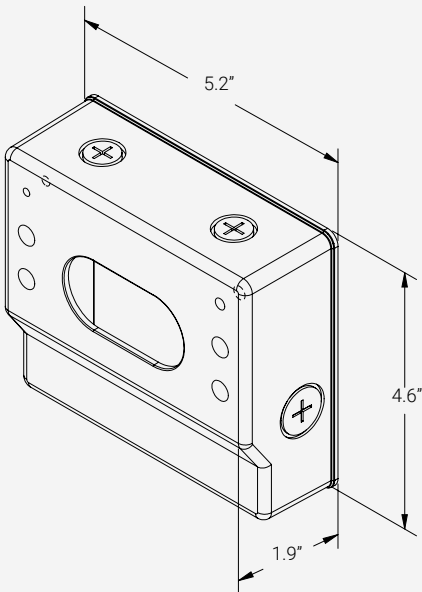
For mounting fixtures to variety of surfaces at different angles. Accommodates a single fixture. The fixture cannot be mounted at an angle greater than 60°.



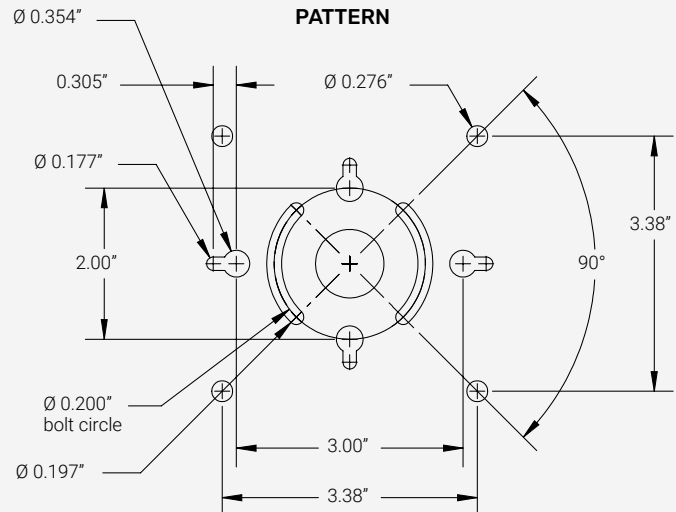
WM

Wall Mount Box

For mounting fixtures to a standard 4" electrical box or directly to any exterior wall with appropriate fasteners. Accommodates a single fixture. WM is available only for SM and MD sizes.



WALL MOUNT PLATE BOLT PATTERN



ORDERING

SERIES MODEL - COMPLIANCE - LUMENS - SIZE	COLOR TEMP	CRI	OPTIC		VOLTAGE
SL2-A1-08K-SM ⁹	50 5000K	70 70+ CRI	T2 Type II	F60 Flood 60 degrees	LV 120-277VAC
SL2-A1-12K-SM	40 4000K		T3 Type III	AFR Automotive Front Row	HV 277-480VAC
SL2-A1-15K-SM			T4 Type IV	FRL Front Row Left	
SL2-A1-18K-SM	35⁴ 3500K		T5 Type V	FRR Front Row Right	
SL2-A1-21K-MD			T5W Type V Wide	TFTM Forward Throw Medium	
SL2-A1-24K-MD	30^{4,5} 3000K		F35 Flood 35 degrees		
SL2-A1-30K-MD					
SL2-A1-32K-MD	27^{4,5} 2700K				
SL2-A1-38K-LG ¹¹					
SL2-A1-46K-LG ¹¹	22^{4,5} 2200K				
SL2-A1-52K-LG ¹¹					
SL2-A1-62K-XL ¹¹	19^{4,5} 1900K				
SL2-A1-71K-XL ¹¹					
SL2-A1-105K-XXL ^{2,7,11}					

HOUSING COLOR	MOUNTING ⁶	SENSORS ¹	CORD	OPTIONS	DIMMING
BRN Bronze	RMB Rapid Mount Bracket	EZ10 EZ-Connect™ Receptacle with Twist Lock system, for use with 0-10V control protocols (standard)	CW 36" cord whip, black, 15A, 3-wire, no plug	SRG20 Surge Protector (20kV/20kA)	10V 0-10V
BLK Black	SF Slip Fitter Bracket	EZ18 EZ-Connect™ Receptacle with Twist Lock system and Zhaga Book 18 interface, for use with 0-10V control protocols		SRGXT Surge Protector for Extreme Exposure Areas (20kV/20kA LV, 20kV/18kA HV)	
WHT White	SA^{5,11} Straight Arm Bracket	Sensors not included, see Controls pages for available EZ10 products		NEMA3^{4,10} 3-Pin Twist Lock Receptacle for external Photocells and/or Surge Protectors	
CUS⁴ Custom (special order)	TM⁷ Trunnion Mount Bracket			NEMA7^{4,10} 7-Pin Twist Lock Receptacle for external Photocells (dimming capable) and/or Surge Protectors	
	WM^{5,8} Wall Mount Box				

ACCESSORIES

Must be ordered separately. Packaged separately.

NEMA COMPONENTS	
PC-NEMA3	Photocell for NEMA3. Field installed.
PC-NEMA7	Photocell for NEMA7. Field installed.
SC-NEMA	Shorting cap for NEMA3 or NEMA7. Field installed.

ACCESSORIES

Must be ordered separately. Packaged separately.

GLARE SHIELDS

SIDE GLARE SHIELDS



SL2-SM-GSS Side Glare Shield Kit for SM Models. Includes 1 Shield. Field Installed.

SL2-MD-GSS Side Glare Shield Kit for MD Models. Includes 2 Shields. Field Installed.

SL2-LG-GSS Side Glare Shield Kit for LG Models. Includes 3 Shields. Field Installed.

SL2-XL-GSS Side Glare Shield Kit for XL Models. Includes 4 Shields. Field Installed.

SL2-XXL-GSS Side Glare Shield Kit for XL Models. Includes 6 Shields. Field Installed.

FRONT GLARE SHIELDS



SL2-SM-GSF Front Glare Shield for SM Models. Field Installed.

SL2-MD-GSF Front Glare Shield for MD Models. Field Installed.

SL2-LG-GSF Front Glare Shield for LG Models. Field Installed.

SL2-XL-GSF Front Glare Shield for XL Models. Field Installed.

SL2-XXL-GSF Front Glare Shield for XXL Models. Field Installed.

BACK GLARE SHIELDS



SL2-SM-GSB Back Glare Shield for SM Models. Field Installed.

SL2-MD-GSB Back Glare Shield for MD Models. Field Installed.

SL2-LG-GSB Back Glare Shield for LG Models. Field Installed.

SL2-XL-GSB Back Glare Shield for XL Models. Field Installed.

SL2-XXL-GSB Back Glare Shield for XXL Models. Field Installed.

BACK LIGHT GLARE SHIELDS - Not available for T4 optics




SL2-SM-BLS Back Light Shield for SM Models. Field Installed.

SL2-MD-BLS Back Light Shield for MD Models. Field Installed.

SL2-LG-BLS Back Light Shield for LG Models. Field Installed.

SL2-XL-BLS Back Light Shield for XL Models. Field Installed.

SL2-XXL-BLS Back Light Shield for XXL Models. Field Installed.

 All glare shields are matte black to suppress reflections and ensure consistent optical performance. Alternative colors are not available, as they may cause unwanted reflections and alter the designed light distribution pattern.

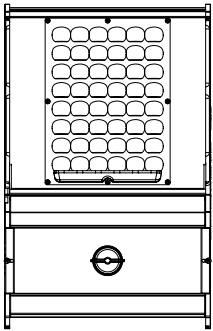
ACCESSORIES

Must be ordered separately. Packaged separately.

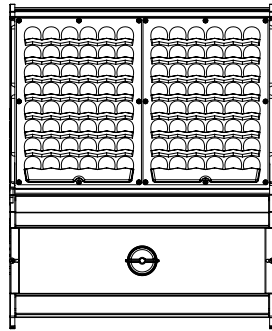
REPLACEMENT OPTICS

Order as needed. Max number of lenses per fixture: **SM=1, MD= 2, LG=3, XL=4, XXL=6**

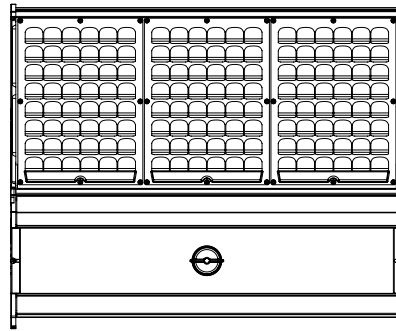
SL2-T2	Replacement (one) Type 2 Lens with HiOptiX Technology. Field Installed.
SL2-T3	Replacement (one) Type 3 Lens with HiOptiX Technology. Field Installed.
SL2-T4	Replacement (one) Type 4 Lens with HiOptiX Technology. Field Installed.
SL2-T5	Replacement (one) Type 5 Lens with HiOptiX Technology. Field Installed.
SL2-F35	Replacement (one) Flood 35 Lens with HiOptiX Technology. Field Installed.
SL2-F60	Replacement (one) Flood 60 Lens with HiOptiX Technology. Field Installed.
SL2-AFR	Replacement (one) Automotive Front Row Lens with HiOptiX Technology. Field Installed.
SL2-FRL	Replacement (one) Front Row Left Lens with HiOptiX Technology. Field Installed.
SL2-FRR	Replacement (one) Front Row Right Lens with HiOptiX Technology. Field Installed.
SL2-TFTM	Replacement (one) Forward Throw Medium Lens with HiOptiX Technology. Field Installed.



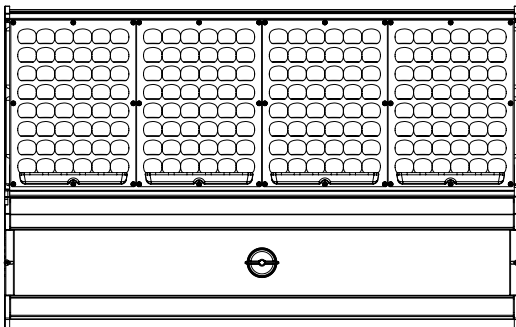
SM
1 Optic



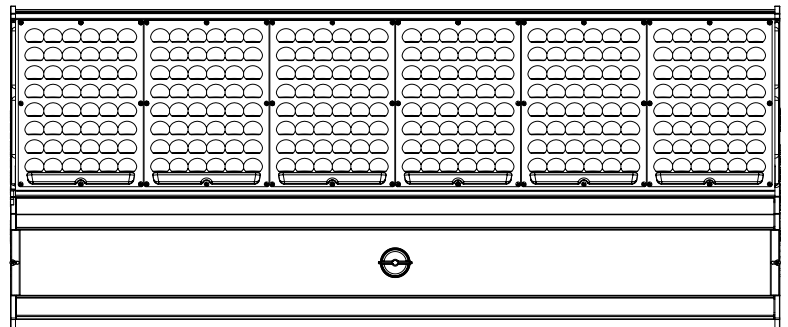
MD
2 Optics



LG
3 Optics



XL
4 Optics



XXL
6 Optics

ACCESSORIES

Must be ordered separately. Packaged separately. Replace ### with fixture housing color: BRN, WH, BLK or CUS. (If CUS, provide RAL, extended lead time.)

MOUNTING ACCESSORIES⁶

TENONS (WALL BRACKETS)

A1-###	Vertical or Horizontal Tenon, for use with 4" and larger square poles or flat surfaces.
A2-###	Round Pole Horizontal Tenon, for use with round poles.
A3-###	Vertical or Horizontal Tenon, for use with flat surfaces including walls and flooring. Provides a round pipe for mounting SL2 fixtures with a Slip Fitter Bracket or for adding Cross Arms.
A4-###	Vertical Tenon (Wall Mount), provides a vertical round pipe for mounting SL2 fixtures with a Slip Fitter Bracket or adding Cross Arms.
A10-###	Single Fixture Multi-Mount Tenon, adds a round pipe for mounting SL2 fixtures to a variety of vertical and horizontal surfaces with a Slip Fitter Bracket; creating unique options for fixture placement.

ADAPTERS

A12-###	Round to Square Pole Adapter, to mount a Straight Arm Mount to a Round Pole.
A5-###	Square Pole to Vertical Slip Fitter Adapter, converts a 4" Square Pole to a 2-3/8" O.D. (outside diameter), vertical mount.
A6-###	Square Pole to Vertical Slip Fitter Adapter, converts a 5" Square Pole to a 2-3/8" O.D. (outside diameter), vertical mount.
A18-###	Square Pole to Vertical Slip Fitter Adapter, converts a 6" Square Pole to a 2-3/8" O.D. (outside diameter), vertical mount.
A19-###	Round Pole to Vertical Slip Fitter Adapter, converts a 5" Round Pole to a 2-3/8" O.D. (outside diameter), vertical mount.
A14-###	Round Pole to Slip Fitter Adapter, reduces from 3" Pole to 2-3/8" O.D. (outside diameter), accommodates a single fixture mounting vertically.
A7-###	Round Pole to Slip Fitter Adapter, reduces from 4" Pole to 2-3/8" O.D. (outside diameter), accommodates a single fixture mounting vertically.
A17-###	Clamp-On Mid-Pole Adapter, for use with 4"-5" Square Poles. Provides a Round Vertical Pipe for mounting SL2 fixtures equipped with a Vertical Slip Fitter Adapter at a position on the pole other than the top, accommodates fixtures mounting vertically with 2-3/8" to 3" O.D. (outside diameter).
A30-###	Spacer for RMB, 2-1/2" square X 7.3" Spacer for use with more than (1) LG or XL fixtures per pole.





CROSS ARMS

A8-###	Two Fixture Bullhorn (straight cross arm), adapts from single 2-3/8" O.D. (outside diameter) to two 2-3/8" O.D. vertical mounting locations, 28" on center apart.
A9-###	Three Fixture Y Tenon (120° cross arm), adapts from single 2-3/8" O.D. (outside diameter) to three 2-3/8" O.D. vertical mounting locations, 28" on center apart.
A11-###	Three Fixture Straight Tenon (straight cross arm), adapts from single 2-3/8" O.D. (outside diameter) to three 2-3/8" O.D. vertical mounting locations, 28" on center apart.
A13-###	Four Fixture 90° Cross Arm, adapts from single 2-3/8" O.D. (outside diameter) to four 2-3/8" O.D. vertical mounting locations, 28" on center apart.
A15-###	Three Fixture T Tenon (90° cross arm), adapts from single 2-3/8" O.D. (outside diameter) to three 2-3/8" O.D. vertical mounting locations, 28" on center apart.
A16-###	Two Fixture L Tenon (90° cross arm), adapts from single 2-3/8" O.D. (outside diameter) to two 2-3/8" O.D. vertical mounting locations, 22.65" on center apart.

BASIC CONTROLS

Controls are field installed, must be ordered as a new line item and will ship in a separate box.

BASIC SENSORS¹

	Part Number	Description
	PC-WH-EZ10 or PC-BK-EZ10	Photocell, White or Black* Color, EZ-Connect Twist Lock System, Plug & Play, Field installed.
	PIR-WH-EZ10 or PIR-BK-EZ10	PIR Occupancy and Daylight Sensor, White or Black* Color, EZ-Connect Twist Lock System, Plug & Play, On/Off/Dim, 40' Max Mounting Height, IP65. Field installed.
	MW-WH-EZ10 or MW-BK-EZ10	Microwave Occupancy and Daylight Sensor, White or Black* Color, EZ-Connect Twist Lock System, Plug & Play, On/Off/Dim, 40' Max Mounting Height, IP65. Field installed.
	SEN-PROG	Infrared Remote Programmer for Occupancy Sensors. Required to change default settings, modes of operation, and detection sensitivity for all EZ10 basic sensors.

*Black color may have an extended lead time, contact sales.


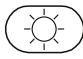
DEFAULT SETTINGS

For PIR and MW Sensors: Sensitivity=100%, Hold time=5min, Daylight sensor=disabled, Stand-by dim level=30%, Stand-by time=60min.



INFRARED REMOTE PROGRAMMER

Required to change default settings, modes of operation, and sensitivity.

Brightness	Light output during occupancy (70%, 80%, 90%, 100%).		Daylight harvesting function. Selects the current surrounding lux value as the daylight threshold.
Sensitivity	Detection area of the sensor (20%, 50%, 75%, 100%).		Daylight sensor disabled. All motion detected turns on the light, no matter how bright the natural light is.
Hold Time	Time the sensor waits to turn off or dim the light after the area is vacated.	Stand-by Dim	Light output during vacancy (0%, 10%, 30%, 50%).
Daylight Sensor	Daylight sensor status and daylight threshold values in lux.	Stand-by Time	Time the sensor keeps the light at stand-by dim level after the hold time has elapsed.






Scene Modes

The remote comes with four preprogrammed modes. These can be used as is, or adjusted with different parameters and saved over an existing mode.

Scene	Application	Brightness	Sensitivity	Hold Time	Stand-by Dim	Stand-by Time	Daylight Sensor
MODE 1	Indoor	100%	75%	5min	30%	30min	Disabled
MODE 2	Indoor	100%	75%	1min	30%	+∞	Disabled
MODE 3	Indoor	100%	75%	5min	30%	30min	30lux
MODE 4	Outdoor	100%	75%	1min	30%	+∞	30lux/300lux






Controls are field installed, must be ordered as a new line item and will ship in a separate box.

ULTRALINK CONTROLLERS / SENSORS¹

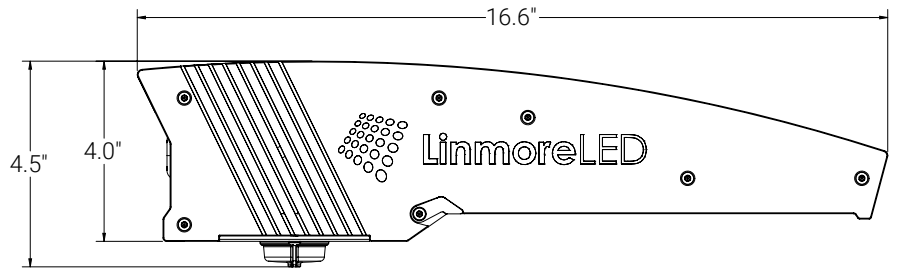
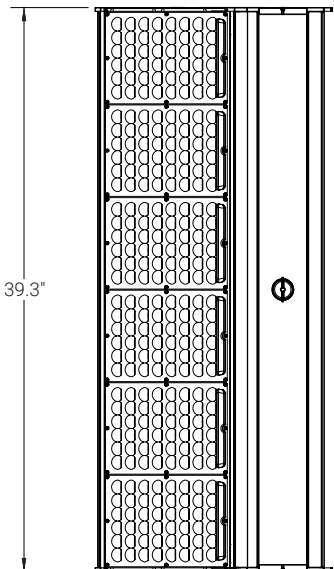
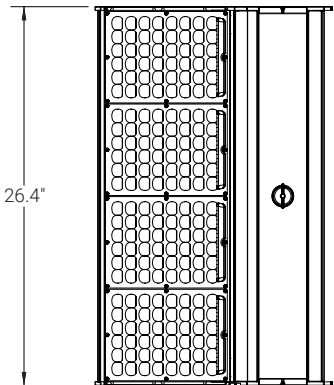
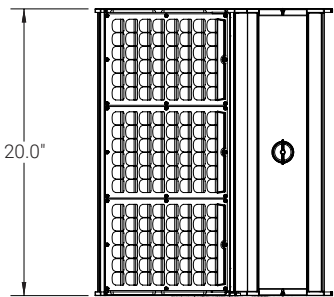
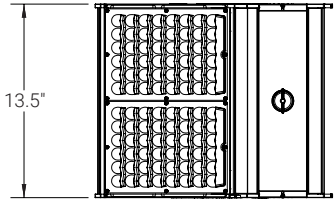
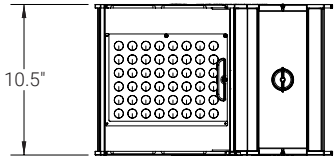
	Part Number	Description
	ULTRA-WH-EZ10 or ULTRA-BK-EZ10	UltraLink Bluetooth NLC Wireless Receiver and Fixture Controller, White or Black* Color, EZ-Connect Twist Lock System, IP65, Silvair Firmware. Field installed.
	ULTRAHGA-CL-EZ10	UltraLink Bluetooth NLC Wireless Receiver and Fixture Controller with Long Range Antenna, Clear Color, EZ-Connect Twist Lock System, IP65, Silvair Firmware. Field installed.
	ULTRAPIR-WH-EZ10 or ULTRAPIR-BK-EZ10	UltraLink Bluetooth NLC Wireless Fixture Controller with PIR Occupancy and Daylight Sensor, White or Black* Color, EZ-Connect Twist Lock System, 40' Max Mounting Height, IP65, Silvair Firmware. Field installed.
	ULTRAMW-WH-EZ10 or ULTRAMW-BK-EZ10	UltraLink Bluetooth NLC Wireless Fixture Controller with Microwave Occupancy and Daylight Sensor, White or Black* Color, EZ-Connect Twist Lock System, 40' Max Mounting Height, IP65, Silvair Firmware. Field installed.
	SEN-PROG	Infrared Remote Programmer for Occupancy Sensors. Only required for EZ10 UltraLink sensors to change detection sensitivity.

*Black color may have an extended lead time, contact sales.

ULTRALINK ACCESSORIES

	Part Number	Description
	ULTRAGATEWAY	UltraLink Bluetooth NLC Wireless Gateway, required for Advanced Features and Time-Based Events. One gateway can control up to 200 fixtures, allowing for energy monitoring, people tracking, and scheduling. Interior installation only.
	ULTRAGATEWAY-EXT	UltraLink Bluetooth NLC Wireless Exterior Rated Gateway Box with Long Range Antenna, includes ULTRAGATEWAY. 120-277V Power Supply required.
	ULTRAGATEWAY-EXT-4G	UltraLink Bluetooth NLC Wireless Exterior Rated Gateway Box with Long Range Antenna and 4G Cellular Connectivity. Includes ULTRAGATEWAY-4G in a Vented, Temperature-Controlled NEMA Enclosure, Universal Voltage (120, 208, 240, 277, and 480V), Wall Mount, 24 Hour Battery Backup. Optional pole mount kit. Cellular data plans available.
	ULTRATIME-BAT	UltraLink Bluetooth NLC Time-Keeping Battery Backup includes an Outdoor Rated Enclosure, a Long Range Antenna and a Backup Battery. For use to keep time during a power outage and for in-node scheduling.
	ULTRADASH	UltraLink Dashboards for Energy, Occupancy Heat Mapping, and Energy Heat Mapping. Gateway (ULTRAGATEWAY) required, sold separately.

DIMENSIONS & DRAWINGS



DIMENSIONS

Size	Length (in)	Width (in)	Height (in)	Weight (lb)
SM	16.6	10.5	4.0	15.1
MD	16.6	13.5	4.0	19.2
LG	16.6	20.0	4.0	27.2
XL	16.6	26.4	4.0	41.2
XXL	16.6	39.3	4.0	53.2

BUG RATINGS

MODEL	T2	T3	T4	T5	T5W	AFR	FRL	FRR	F35	F60	TFTM
SL2-A1-08K-SM	B3-U0-G3	B2-U0-G2	B2-U0-G2	B3-U0-G2	B4-U0-G3	B2-U0-G2	B3-U0-G3	B3-U0-G3	B4-U0-G1	B4-U0-G0	B2-U0-G2
SL2-A1-12K-SM	B3-U0-G3	B2-U0-G2	B2-U0-G3	B4-U0-G2	B4-U0-G3	B2-U0-G2	B3-U0-G3	B3-U0-G3	B5-U0-G1	B5-U0-G1	B2-U0-G3
SL2-A1-15K-SM	B3-U0-G3	B3-U0-G3	B2-U0-G3	B4-U0-G2	B5-U0-G3	B2-U0-G2	B3-U0-G3	B3-U0-G3	B5-U0-G1	B5-U0-G1	B3-U0-G3
SL2-A1-18K-SM	B3-U0-G3	B3-U0-G3	B3-U0-G3	B4-U0-G2	B5-U0-G4	B3-U0-G3	B4-U0-G4	B4-U0-G4	B5-U0-G1	B5-U0-G1	B3-U0-G3
SL2-A1-21K-MD	B3-U0-G4	B3-U0-G3	B3-U0-G4	B5-U0-G3	B5-U0-G4	B3-U0-G3	B4-U0-G4	B4-U0-G4	B5-U0-G1	B5-U0-G1	B3-U0-G3
SL2-A1-24K-MD	B4-U0-G4	B3-U0-G4	B3-U0-G4	B5-U0-G3	B5-U0-G4	B3-U0-G3	B4-U0-G4	B4-U0-G4	B5-U0-G1	B5-U0-G1	B3-U0-G4
SL2-A1-30K-MD	B4-U0-G4	B3-U0-G4	B3-U0-G4	B5-U0-G4	B5-U0-G5	B3-U0-G4	B5-U0-G4	B5-U0-G4	B5-U0-G1	B5-U0-G1	B4-U0-G4
SL2-A1-32K-MD	B4-U0-G4	B3-U0-G4	B3-U0-G4	B5-U0-G4	B5-U0-G5	B4-U0-G4	B5-U0-G4	B5-U0-G4	B5-U0-G1	B5-U0-G1	B4-U0-G4
SL2-A1-38K-LG	B4-U0-G5	B4-U0-G5	B3-U0-G5	B5-U0-G4	B5-U0-G5	B4-U0-G4	B5-U0-G5	B5-U0-G5	B5-U0-G1	B5-U0-G1	B4-U0-G5
SL2-A1-46K-LG	B5-U0-G5	B4-U0-G5	B4-U0-G5	B5-U0-G5	B5-U0-G5	B4-U0-G5	B5-U0-G5	B5-U0-G5	B5-U0-G2	B5-U0-G1	B5-U0-G5
SL2-A1-52K-LG	B5-U0-G5	B4-U0-G5	B4-U0-G5	B5-U0-G5	B5-U0-G5	B4-U0-G5	B5-U0-G5	B5-U0-G5	B5-U0-G2	B5-U0-G2	B5-U0-G5
SL2-A1-62K-XL	B5-U0-G5	B5-U0-G5	B4-U0-G5	B5-U0-G5	B5-U0-G5	B5-U0-G5	B5-U0-G5	B5-U0-G5	B5-U0-G2	B5-U0-G2	B5-U0-G5
SL2-A1-71K-XL	B5-U0-G5	B5-U0-G5	B4-U0-G5	B5-U0-G5	B5-U0-G5	B5-U0-G5	B5-U0-G5	B5-U0-G5	B5-U0-G2	B5-U0-G2	B5-U0-G5
SL2-A1-105K-XXL	B5-U0-G5	B5-U0-G5	B5-U0-G5	B5-U0-G5	B5-U0-G5	B5-U0-G5	B5-U0-G5	B5-U0-G5	B5-U0-G3	B5-U0-G3	B5-U0-G5

EPA RATINGS

TILT ANGLE	ITEM					
		SM	MD	LG	XL	XXL
0°	SM	0.75	1.19	1.51	1.94	1.94
	MD	0.75	1.29	1.51	2.04	2.04
	LG	0.75	1.51	1.51	2.26	2.26
	XL	0.97	1.72	1.51	2.47	2.47
	XXL	1.39	2.15	1.51	2.90	2.90
15°	SM	0.75	1.37	1.51	2.13	2.13
	MD	0.77	1.53	1.51	2.28	2.28
	LG	1.10	1.86	1.51	2.61	2.61
	XL	1.43	2.18	1.51	2.93	2.93
	XXL	2.08	2.84	2.08	4.17	4.17
30°	SM	0.95	1.71	1.51	2.46	2.46
	MD	1.19	1.95	1.51	2.70	2.70
	LG	1.72	2.47	1.72	3.43	3.43
	XL	2.23	2.98	2.23	4.46	4.46
	XXL	3.27	4.02	3.27	6.54	6.54
45°	SM	1.23	1.98	1.51	2.74	2.74
	MD	1.55	2.30	1.55	3.09	3.09
	LG	2.23	2.98	2.23	4.46	4.46
	XL	2.90	3.66	2.90	5.80	5.80
	XXL	4.26	5.01	4.26	8.52	8.52
60°	SM	1.43	2.18	1.51	2.94	2.94
	MD	1.80	2.55	1.80	3.60	3.60
	LG	2.60	3.35	2.60	5.19	5.19
	XL	3.38	4.14	3.38	6.77	6.77
	XXL	4.97	5.72	4.97	9.93	9.93

EPA ratings measured in square feet.

FOOTNOTES

1. The performance of sensors and lenses is influenced by various factors beyond Linmore LED's control, including but not limited to environmental conditions, user settings, and proper maintenance. While we provide detailed specifications and guidelines to help optimize performance, we cannot guarantee or be held liable for the performance of sensors or lenses under any particular circumstance(s). Customers are advised to test the products in their specific application environments to ensure suitability for their intended use and are responsible for all sensor and lens selections.
2. XXL model has a max. ambient of 50°C.
3. Capable of withstanding 5G vibration (as per ANSI 136.31-2023) on XL or smaller size luminaires equipped with SF, SA or RMB mounts.
4. Extended lead time. Contact factory.
5. DarkSky approved 3000K CCT or warmer with SA or WM mounting options only.
6. Fixture housing color will be applied. Custom color is a cost adder with extended lead time.
7. XXL model available only with TM (Dual Trunnion Mount).
8. WM (Wall Mount) option only available with SM and MD models.
9. HV models are DLC listed only up to 347VAC.
10. Must be ordered with NEMA shorting cap or NEMA Photocell.
11. Installation of multiple LG or XL fixtures on the same pole requires Pole Spacers (A30-###).

Linmore

2360 S Orange Ave, Fresno, CA 93725
559 485 6010 | info@linmoreled.com | linmoreled.com



All specifications are subject to change without notice. Please visit linmoreled.com for latest information. All values are typical or design values and series averages. Actual performance may differ as a result of end-user environments and applications. Consult Linmore with specific inquiries. Copyright © 2026, Linmore LED Labs, Inc. All rights reserved. No part of this document may be reproduced in any form without the prior written permission of Linmore.

Updated: 2026/07/07