

SITE LIGHTER (SL1) INSTALLATION INSTRUCTIONS

These instructions do not purport to cover all details or variations in components nor to provide for every possible contingency to be met in connection with installation, operation, or maintenance. Should further information be desired or should a particular problem arise which is not covered sufficiently for the purchaser's purpose, the matter should be referred to Linmore LED Labs. Linmore does not claim liability for any installation not performed according to this guide or not by a qualified electrician.

IMPORTANT SAFEGUARDS

When using electrical equipment, basic safety precautions should always be followed including the following:

READ AND FOLLOW ALL SAFETY INSTRUCTIONS

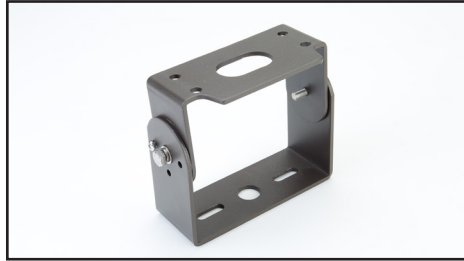
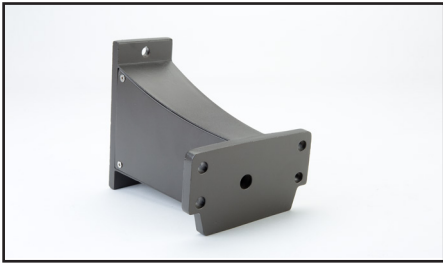
1. **DANGER – RISK OF SHOCK – DISCONNECT POWER BEFORE INSTALLATION**
2. **WARNING** – Risk of fire or electric shock. LED Upgrade Kit installation requires knowledge of luminaires electrical systems. If not qualified, do not attempt installation. Product must be installed in accordance with NEC or your local electrical code. If you are not familiar with these codes and requirements, contact a qualified electrician.
3. **WARNING** – Risk of fire or electric shock. Luminaire wiring and electrical parts may be damaged when drilling for installation of the LED upgrade kit. Check for enclosed wiring and components.
4. **WARNING** – Risk of fire or electric shock. Check the existing wiring for damage before installing upgrade kit. Do not install if existing wires are damaged.
5. **WARNING** – To prevent wiring damage or abrasion, do not expose wires to the edge of sheet metal or any other sharp objects.
6. **WARNING** – Risk of fire or electric shock. Install this kit only in the luminaires that have the construction features and dimensions shown in the photographs and/or drawings.
7. The retrofit assembly is accepted as a component of a luminaire where the suitability of the combination shall be determined by UL or authorities having jurisdiction.
8. Only the holes indicated in the photographs or drawings may be made or altered as a result of the kit installation. Do not leave any other holes open in a wiring enclosure or electrical component.

SAVE THESE INSTRUCTIONS FOR FUTURE REFERENCE NOTES:

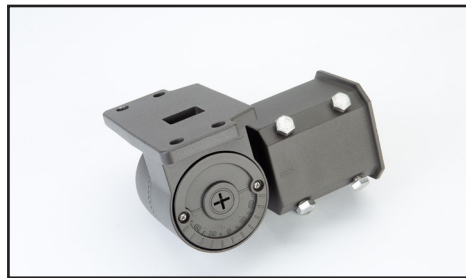
1. Installed Site Lighter mounting option may be included if ordered.

LIST OF SUPPLIED COMPONENTS:

1. Site Lighter mounting option will either be attached or will include trunion with hardware.
2. Straight Arm
3. Trunion (Yoke) Mount



4. Slip Fitter (Knuckle Adapter)



LIST OF ITEMS INSTALLER MAY HAVE TO SUPPLY:

1. Wire Nuts
2. Fasteners

NOTE: THE INSTRUCTIONS BELOW REFLECT THE STEPS NECESSARY FOR A TYPICAL EXTERIOR LIGHT INSTALLATION

1. **Step 1:** Bring Site Lighter to area of installation.
2. **Step 2:** Confirm electricity has been de-energized. Disconnect fixture from circuit and carefully unbolt and remove from pole if applicable.
3. **Step 3:** Feed new Site Lighter wiring through existing hole in light pole. Attach new Site Lighter to Pole or Bracket and connect to circuit.

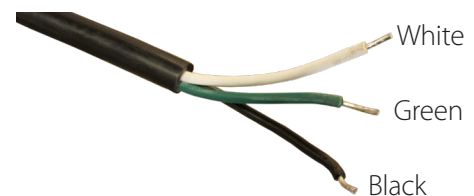
The Site Lighter comes with:

A **white** neutral wire.

A **green** ground wire.

A **black** line voltage for either 120-277V or 347-480V

NOTE: ALWAYS VERIFY VOLTAGE AT SITE



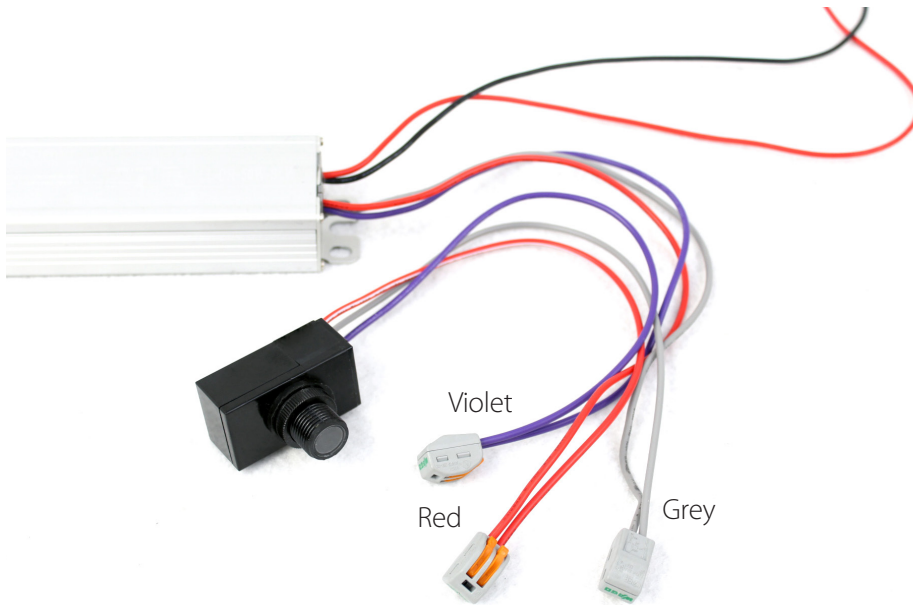
NOTE: THE INSTRUCTIONS BELOW REFLECT THE STEPS NECESSARY FOR THE LINMORE LOW VOLTAGE PHOTOCELL (LVPC)

1. **Step 1:** Connect the **red** with **white** stripe 12VDC wire from the driver to the **red** with **white** stripe wire on the LVPC. Connect **violet** from the driver to the **violet** on the LVPC. Connect the **grey** from the driver to the **grey** on the LVPC.
2. **Step 2:** If installing the LVPC in an area susceptible to light either from the same fixture or another, please use provided shield to block light to LVPC.

Red 12VDC

Violet: Dim +

Grey: Dim -



BELOW ARE INSTRUCTIONS FOR INSTALLING WITH THE RAPID MOUNT BRACKET (PATENT PENDING)

1. **Step 1:** Remove pole cap and Suspend Rapid Mount Backing Plate from top of Pole using provided safety tether.



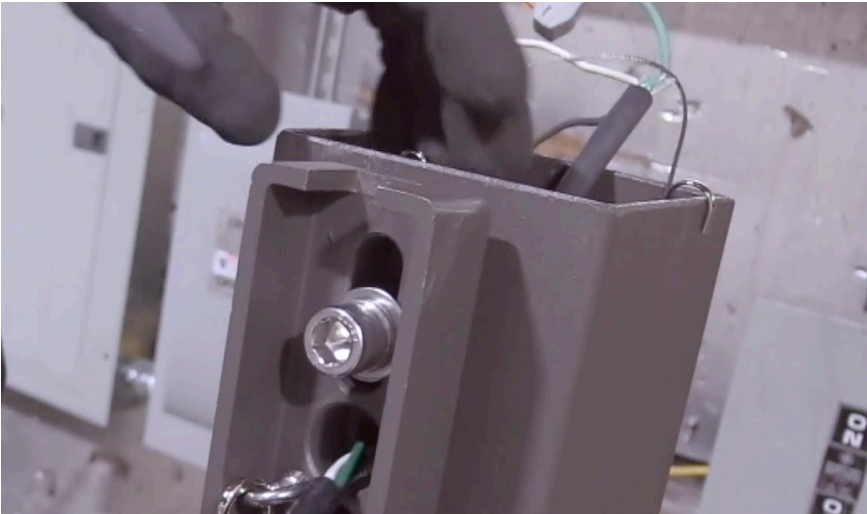
2. **Step 2:** Align Receiving Plate with Backing Plate nuts. Secure hand tight. Level Receiving Plate and finish tightening bolts.



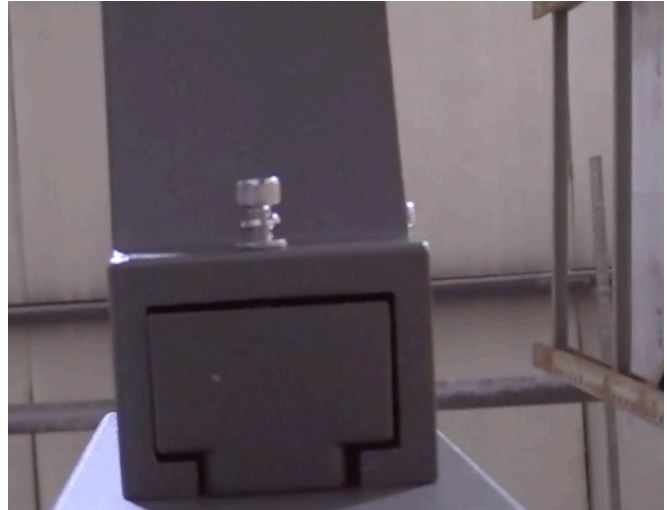
3. **Step 3:** Attach Site Lighter to Receiving Plate with provided safety tether.



4. **Step 4:** Feed Site Lighter power cable through hole into the pole.



5. **Step 5:** Slide Site Lighter over the top of the Receiving Plate until it seats to the bottom of the Plate. The securely attach bracket set screw.



6. **Step 6:** Replace pole cap.
7. **Step 7:** Connect the power supply to the fixture. Installation is complete.