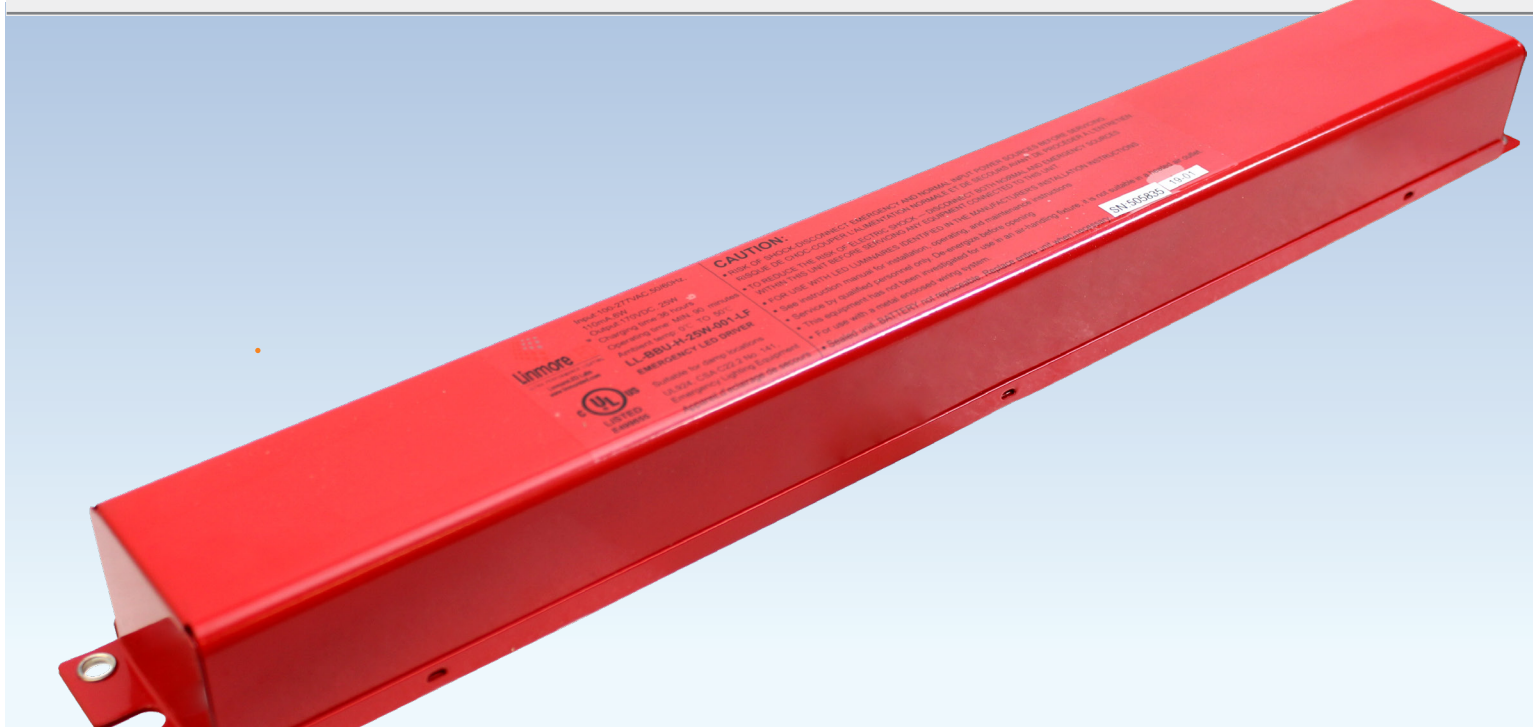


LED INTERNAL DRIVER EMERGENCY BACKUP - LINE VOLTAGE OUTPUT



Linmore LED Labs LED Internal Driver Emergency Backup - Line Voltage Output is a UL recognized LED Emergency Backup Driver that allows the same LED fixture to be used for both normal and emergency operations. In the event of a power failure, the Emergency backup switches to the emergency mode and operates the existing fixture for 90 minutes. The unit contains a battery, charger, and converter circuit in a single can and is available in different mounting configurations for individual fixture requirements.

Highlights:

- For use with internal driver systems
- 120-277VAC input charging voltage
- 170VDC output voltage
- 120VAC LED driver inputs
- 25W power output
- At least 90 minutes of backup time at rated wattages
- 6W max power draw when charging
- Designed for Externally Driven LED fixtures

Specifications:

- Input Voltage: 100-277VAC, 50/60Hz
- Input Current: 35mA max
- Input Power: 6 Watts
- Output Voltage: 170 VDC
- Max. Connected Load: 110mA max
- Output Power: 16 Watts » 25 Watts
- Emergency Operation: >90 minutes
- Battery: High Temperature Nickel-Cadmium 24 Hour Recharge 7-10 Year Life Expectancy
- Ambient Temperature: Up to 122° F
- Warranty: 5 Years

LED INTERNAL DRIVER EMERGENCY BACKUP - LINE VOLTAGE OUTPUT

Benefits:

- UL Listed for field installation
- Universal line input voltage (100-277VAC)
- High Temperature Nickel-Cadmium 24 Hour Recharge 7-10 Year Life Expectancy
- Provides full-power backup up to 25W for 90 minutes or more
- Surface-mounted housing with flexible metal conduit

NOTE:

- For HV Models, Output Wattage must Exceed Wattage of Product. Example, an RLB at 22 Watts Requires the LL-BBU-25W-HV

Specifications

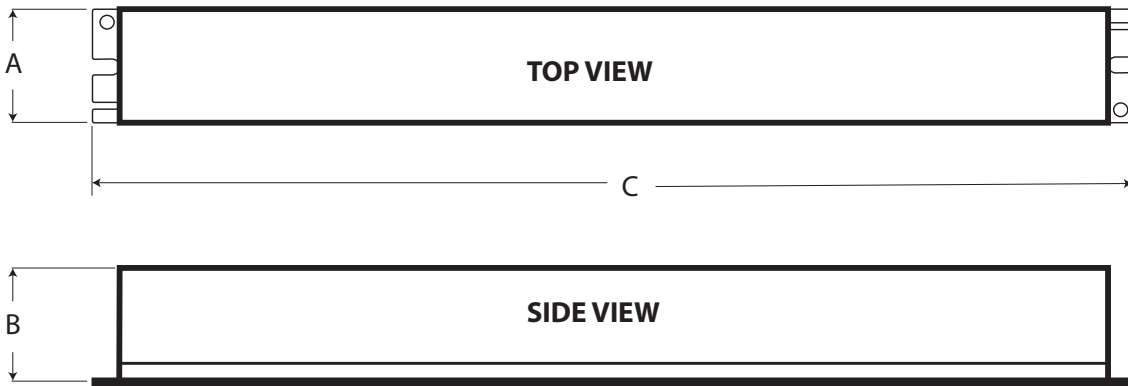
Input Voltage	100-277VAC,50/60Hz
Input Current	110mA max
Input Power	6 Watts
Output Voltage	170 VDC
Max. Connected Load	0.67 A or 1 A
Output Power	16w, 25w
Emergency Operation	>90 minutes
Charging time	36 hours
Battery	High Temperature Nickel-Cadmium 24 Hour Recharge 7-10 Year Life Expectancy
Ambient Temperature	Up to 122° F
Warranty	5 years
Certifications	UL 924, CSA C22.2

Ordering Information

Model	Wattage Output	Voltage
LL-BBU	16	High Voltage (H)
	25	

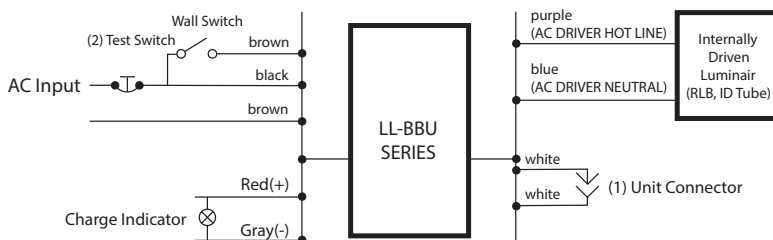
Example

LL-BBU-25W-HV



Model	16W	25W
A	2.1"	2.1"
B	2.1"	2.1"
C	15.8"	17.125"

WIRING DIAGRAM



NOTE: Make sure the necessary branch circuit wiring is available. An unswitched source of power is required. The Unswitched and switched power sources must be fed from the same branch circuit.