

PROJECT NAME		DATE	
CAT. NUMBER			
NOTES			

SPEC SHEET

Ace LED Vaportight (AV2)

LED VAPORTIGHT FIXTURE



Projected L70 up to 150,000 hours



KEY FEATURES

- 3,900 to 6,500 Lumens
- Up to 130 LPW
- Selectable CCT: (3500K, 4000K, 5000K)
- Selectable Output Power: 30W / 40W / 50W
- Frosted Lens
- Low Glare
- NSF & NEMA 4X



Selectable Wattage

Each fixture has a switch with three output power options, allowing to select the desired lumen output and energy consumption for each application.



Selectable Color Temperature

Simply use the switch directly on the fixture to select the desired color temperature for your space: 3500K, 4000K, or 5000K.



IP Rated

IP65 rated. Meets NSF Splash Zone 2 and NSF/ANSI STD2. Handles high pressure water up to 1,500psi.

FEATURES & SPECIFICATIONS

CONSTRUCTION

- **Housing:** UL 94 5VA fiberglass housing (will not melt or burn). Weatherability (f1) rated. Suitable for outdoor use with respect to exposure to ultraviolet light, water exposure and immersion in accordance with UL 746. Capable of handling high pressure water up to 1,500psi.
- **Latches:** 304 stainless steel.

ELECTRICAL

- **Power Input:** 120-277V (50/60Hz).
- **Power Factor:** Greater than 0.9.
- **Total Harmonic Distortion:** Less than 20%.
- **Emergency Battery Backup:** 9 Watts output. Fixtures with EMB will produce ~1,100lm (130 LPW) for a minimum of 90 minutes. Field installed. Available as an accessory, sold separately.

OPERATION

- **Environment:** Suitable for indoor and outdoor applications. Dust-tight and protected against water jets and heavy splash (IP65). Rated for wet locations.
- **Ambient Range Operation:** -20°C up to 40°C (-4°F up to 104°F).

OPTICS

- **CCT:** Selectable: 3500K, 4000K, 5000K.
- **CRI:** 80+ standard.
- **Lens:** UV-stabilized polycarbonate, high impact-resistant, low-glare prismatic design. Frosted, 120° beam angle.

MOUNTING

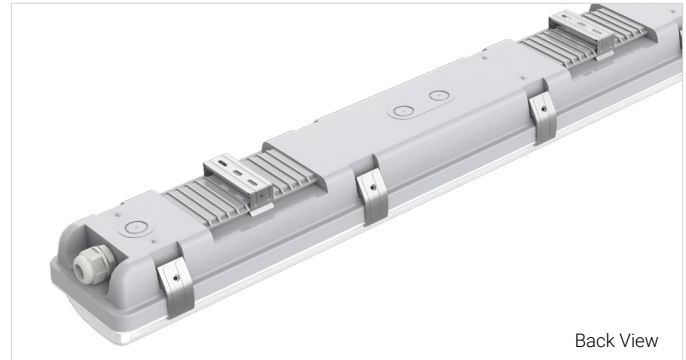
- **Surface Mount:** Surface mount kit available as an accessory.

CONTROLS¹

- **Dimming:** 0-10V standard. Dim to Off. Dimming range 100% to 5%.



Side View



Back View

WARRANTY

- **5 Year Warranty:** The fixture is guaranteed for 5 years free of defects in materials and workmanship, including LEDs and driver. "Defective" is considered if ten percent (10%) or more of the LEDs, per product, are non-operating LEDs, or color temperature has shifted more than 500° Kelvin within the warranty period. See terms and conditions at <https://linmoreled.com/warranty>

LISTINGS & CERTIFICATIONS

- IK08 rated.
- IP65 rated.
- NEMA 4X rated.
- Rated and certified to meet NSF Splash Zone 2
- ETL listed for damp locations.
- Suitable for wet locations.
- RoHS compliant.
- DesignLights™ Consortium Premium.

TECHNICAL SPECS

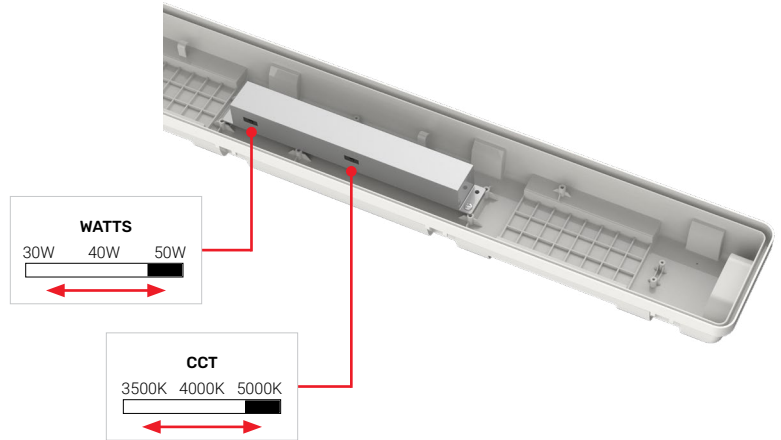
SIZE	WATTS	LUMEN OUTPUT	EFFICACY	PART NUMBER
4ft	30 / 40 / 50	3,900 / 5,200 / 6,500	130	AV20S-A2-ADJ-4N-ADJ-80-FR-LV-FXT-10V

Typical lumen output (±10%) at 5000K CCT and 277V (LV) under 25°C ambient temperature.

Selectable Wattage and Color Temperature

Fixtures ship from the factory with the highest wattage and 5000K CCT, to change these settings:

1. Make sure the fixture is off.
2. Adjust the dip switches located on the driver inside the fixture to select output power and color temperature.



ORDERING

SERIES MODEL - COMPLIANCE - WATTS - SIZE	COLOR TEMP	CRI	LENS	VOLTAGE
AV20S-A2-ADJ-4N	ADJ Adjustable/Selectable: 3500K, 4000K, 5000K	80 80+ CRI	FR Frosted lens	LV 120-277V

MOUNTING	DIMMING
FXT Full fixture Mounting kits sold separately, see Accessories	10V 0-10V

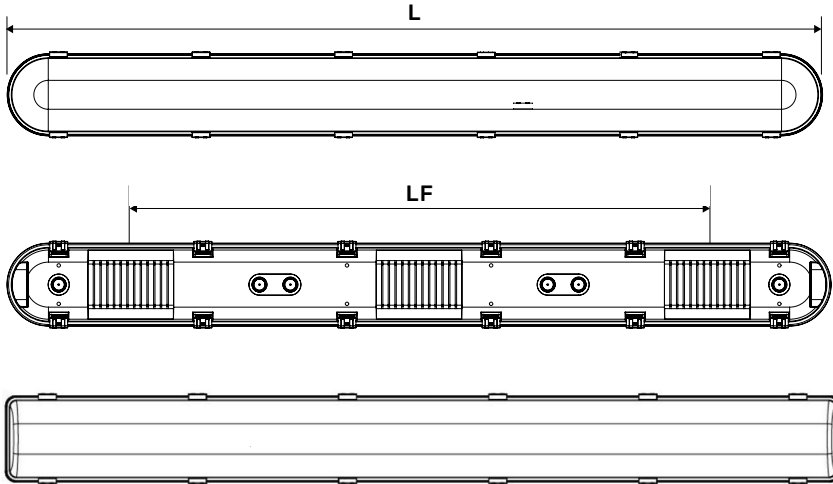
Ordering Example: AV20S-A2-ADJ-4N-ADJ-80-FR-LV-FXT-10V

ACCESSORIES

Must be ordered separately. Packaged separately.

FIXTURE ACCESSORIES		
Part Number	Type	Description
CABLEKIT-TE	Cable Kit	Kit includes two cables and two toggle hangers.
AV2-EMB-09W	Emergency Battery Backup	Emergency Backup Driver with Battery, 9 Watts output for >90 minutes. Simple Wiring, Metal Conduit. Field installed.

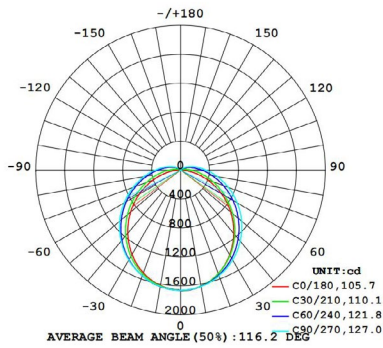
DIMENSIONS & DRAWINGS



Size	L	LF	W	H
4ft	47.24"	33.46"	4.96"	3.58"

Dimension tolerances: $\pm 0.1"$.

PHOTOMETRY



FOOTNOTES

- The performance of sensors and lenses is influenced by various factors beyond Linmore LED's control, including but not limited to environmental conditions, user settings, and proper maintenance. While we provide detailed specifications and guidelines to help optimize performance, we cannot guarantee or be held liable for the performance of sensors or lenses under any particular circumstance(s). Customers are advised to test the products in their specific application environments to ensure suitability for their intended use and are responsible for all sensor and lens selections.

Linmore LED Labs, Inc.

2360 S Orange Ave, Fresno, CA 93725

559 485 6010 | info@linmoreled.com | linmoreled.com



All specifications are subject to change without notice. Please visit linmoreled.com for latest information. All values are typical or design values and series averages. Actual performance may differ as a result of end-user environments and applications. Consult Linmore LED with specific inquiries. Copyright © 2026, Linmore LED Labs, Inc. All rights reserved. No part of this document may be reproduced in any form without the prior written permission of Linmore LED.