



## ACE BAR KIT (TRK) INSTALLATION INSTRUCTIONS

These instructions do not purport to cover all details or variations in components nor to provide for every possible contingency to be met in connection with installation, operation, or maintenance. Should further information be desired or should a particular problem arise which is not covered sufficiently for the purchaser's purpose, the matter should be referred to Linmore LED Labs. Linmore does not claim liability for any installation not performed according to this guide or not by a qualified electrician.

### IMPORTANT SAFEGUARDS

When using electrical equipment, basic safety precautions should always be followed including the following:

### READ AND FOLLOW ALL SAFETY INSTRUCTIONS

1. **DANGER – RISK OF SHOCK – DISCONNECT POWER BEFORE INSTALLATION**
2. **WARNING** – Risk of fire or electric shock. LED Upgrade Kit installation requires knowledge of luminaires electrical systems. If not qualified, do not attempt installation. Product must be installed in accordance with NEC or your local electrical code. If you are not familiar with these codes and requirements, contact a qualified electrician.
3. **WARNING** – Risk of fire or electric shock. Luminaire wiring and electrical parts may be damaged when drilling for installation of the LED upgrade kit. Check for enclosed wiring and components.
4. **WARNING** – Risk of fire or electric shock. Check the existing wiring for damage before installing upgrade kit. Do not install if existing wires are damaged.
5. **WARNING** – To prevent wiring damage or abrasion, do not expose wires to the edge of sheet metal or any other sharp objects.
6. **WARNING** – Risk of fire or electric shock. Install this kit only in the luminaires that have the construction features and dimensions shown in the photographs and/or drawings.
7. The retrofit assembly is accepted as a component of a luminaire where the suitability of the combination shall be determined by UL or authorities having jurisdiction.
8. Only the holes indicated in the photographs or drawings may be made or altered as a result of the kit installation. Do not leave any other holes open in a wiring enclosure or electrical component.

## SAVE THESE INSTRUCTIONS FOR FUTURE REFERENCE NOTES:

1. Retrofit Kit is for installation in a common troffer in 2'x2' or 2'x4' configurations.
2. Consult your local authority regarding disposal or recycling of removed ballast and lamps.

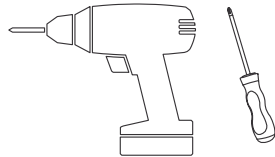
## LIST OF SUPPLIED COMPONENTS:

- A. Light Bars
- B. Magnetic Brackets. (One per light bar)
- C. Driver
- D. Self-Tapping Screws

## LIST OF ITEMS INSTALLER MAY HAVE TO SUPPLY:

1. Drill
2. Screwdriver

### Tools required

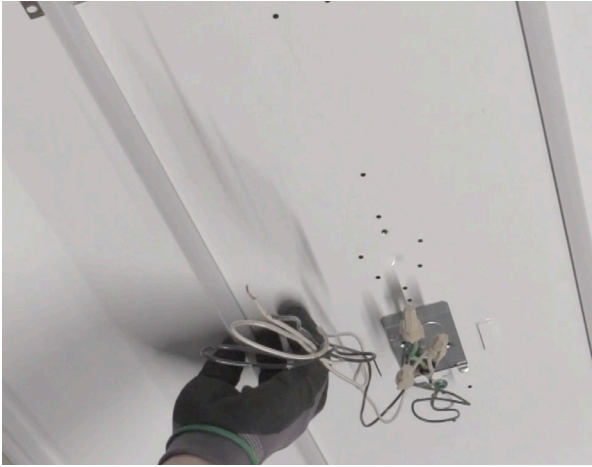


## INSTALLATION

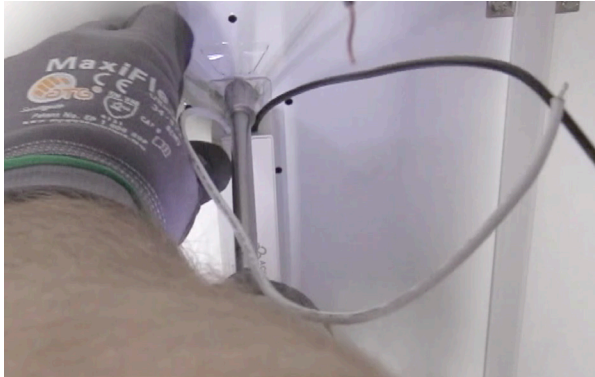
1. **Step 1:** Turn power off and take out existing tubes and ballast.
2. **Step 2:** Affix Magnetic Brackets onto the middle of the the light bars. Magnetically attach the light bars to the interior of the fixture body.



- Step 3:** While light bars are magnetically attached only, align light bar screw holes to desired placement. Then secure with provided self-tapping screws.



- Step 4:** Install Ace Driver on the fixture body. Connect light bars using plug-in connectors.



- Step 5:** Connect Driver DC 0-10V dimmable wire (when applicable), ground wire and AC connections.



- Step 6:** Place pan cover over new driver and wiring.
- Step 7:** Close troffer door, turn power on. The installation is finished.