



Troffer Complete System Installation Instructions

Revised: 20180126

These instructions do not purport to cover all details or variations in components nor to provide for every possible contingency to be met in connection with installation, operation, or maintenance. Should further information be desired or should a particular problem arise which is not covered sufficiently for the purchaser's purpose, the matter should be referred to Linmore LED Labs. Linmore does not claim liability for any installation not performed according to this guide or not by a qualified electrician.

IMPORTANT SAFEGUARDS

When using electrical equipment, basic safety precautions should always be followed including the following:

READ AND FOLLOW ALL SAFETY INSTRUCTIONS

1. DANGER – RISK OF SHOCK – DISCONNECT POWER BEFORE INSTALLATION
2. WARNING – Risk of fire or electric shock. LED Upgrade Kit installation requires knowledge of luminaires electrical systems. If not qualified, do not attempt installation. Product must be installed in accordance with NEC or your local electrical code. If you are not familiar with these codes and requirements, contact a qualified electrician.
3. WARNING – Risk of fire or electric shock. Luminaire wiring and electrical parts may be damaged when drilling for installation of the LED upgrade kit. Check for enclosed wiring and components.
4. WARNING – Risk of fire or electric shock. Check the existing wiring for damage before installing upgrade kit. Do not install if existing wires are damaged.
5. WARNING – To prevent wiring damage or abrasion, do not expose wires to the edge of sheet metal or any other sharp objects.
6. WARNING – Risk of fire or electric shock. Install this kit only in the luminaires that have the construction features and dimensions shown in the photographs and/or drawings.
7. The retrofit assembly is accepted as a component of a luminaire where the suitability of the combination shall be determined by UL or authorities having jurisdiction.
8. Only the holes indicated in the photographs or drawings may be made or altered as a result of the kit installation. Do not leave any other holes open in a wiring enclosure or electrical component.

SAVE THESE INSTRUCTIONS FOR FUTURE REFERENCE NOTES:

1. Troffer is for installation in a standard 1x4, 2x2, or 2x4 T-Bar Ceiling.

LIST OF SUPPLIED COMPONENTS:

Complete Troffer Fixture with URS Light Bar, Driver, and Lens Installed (unless specified otherwise)

LIST OF ITEMS INSTALLER MAY HAVE TO SUPPLY:

Seismic Restraint Wire
Wire Nuts

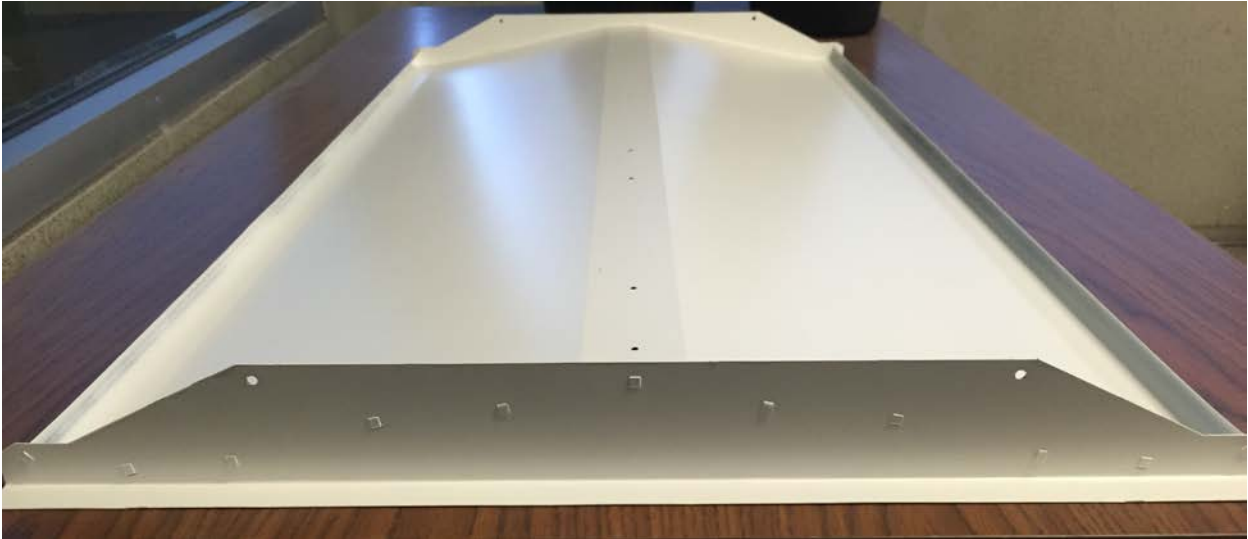
NOTE: The instructions below reflect the steps necessary for typical T-Bar Ceiling.

Step 1: Bring the Troffer to an appropriate size opening in the T-Bar ceiling.

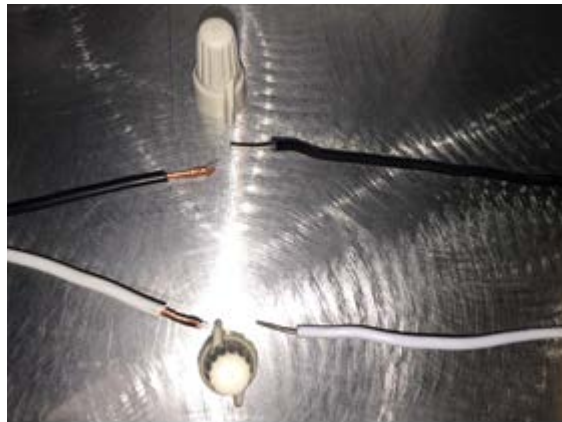


Step 2: Lay the Troffer on top of the T-Bar in the opening.

Step 3: If required by local build codes or chosen by the installer, install Seismic Restraint Wire in the supplied holes on the Troffer. There are two on each end.



Step 4: The Driver is mounted to the top of the troffer under a cover. Make the input electrical connection per diagram on the face of the LED Driver. The White Input Wire is the Neutral. The Black or Red Input Wire is Line Voltage Input from 100 – 277 Volts.



Step 5: The LED Driver comes standard with 0-10 Volt Dimming. The Red, Purple, and Grey wires on the output side of the driver are for dimming functions. If the dimming functions will not be used, leave the quick disconnect on the 3 wires.



If the dimming functions will be used, this is the function of the dimming wires:

Purple: 0-10V + Dimming Input

Grey: 0-10V – Dimming Input

Red: Input Power Supply for Dimmer at 12 Volts

Step 6: Restore the power supply to the fixture and ensure proper operation.

