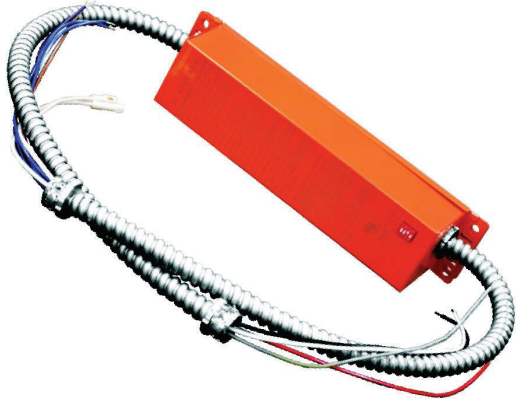


## LED LAMP EMERGENCY BACKUP

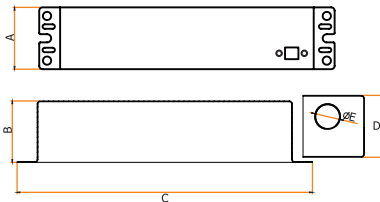
The LED Lamp Emergency Backup from Linmore LED Labs is a UL Recognized LED Lamp Emergency Backup that allows the same LED fixture to be used for both normal and emergency operation. In the event of a power failure, the LED Lamp Emergency backup switches to the emergency mode and operates the existing fixture for 90 minutes. The unit contains a battery, charger, and converter circuit in a single can and is available in different mounting configurations for individual fixture requirements.



### FEATURES

- Dial the code to suitable rated voltage of luminaire.
- Long life high temperature recyclable Ni-Cad battery.
- Includes test switch and charge indicator accessory kit.
- For use with switched or unswitched fixtures.
- Meets or exceeds all National Electrical Code and Life Safety Code Emergency Lighting.

### DIMENSIONS

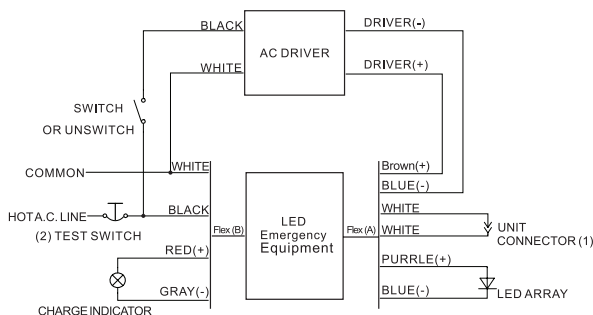


Model	0848	2548
A	2.2"	2.7"
B	2.2"	2.8"
C	10.4"	14.8"
D	2.7"	2.7"
E	.9"	.9"

### TECHNICAL SPECIFICATIONS

Input Voltage	100-277VAC, 50/60Hz		
Input Current	35mA max		
Input Power	4 Watts		
Output Voltage	12V-48VDC	18V-48VDC	
Max. Connected Load	0.67 A	1 A	
Output Power	8 Watts	25 Watts	
Emergency Operation	>90 minutes		
Battery	High Temp Nickel-Cadmium 24 Hour Recharge 7-10 Year Life Expectancy		
Ambient Temperature	Up to 122 F		
Warranty	5 years		

### TYPICAL WIRING DIAGRAM



Adjust DIP switches to appropriate DC Voltage required by external driver.

Model	Emergency Power	Switch Select	Current	Voltage
BBU-0848	8 Watts	1	0.66A	0.66A
		2	0.33A	0.33A
		3	0.22A	0.22A
		4	0.19A	0.19A
BBU-2548	25 Watts	1	1.39A	18V
		2	1.04A	24V
		3	0.70A	36V
		4	0.60A	42V

- (1) DO NOT MATE CONNECTOR UNTIL INSTALLATION IS COMPLETE AND AC POWER IS SUPPLIED.
- (2) TEST ACCESSORY LEADS-OBSERVE PROPER POLARITY WIRING.

