



*Strip Fixture URS Light Bar
Retrofit Installation Instructions*
Revised: 20160520

These instructions do not purport to cover all details or variations in components nor to provide for every possible contingency to be met in connection with installation, operation, or maintenance. Should further information be desired or should a particular problem arise which is not covered sufficiently for the purchaser's purpose, the matter should be referred to Linmore LED Labs. Linmore does not claim liability for any installation not performed according to this guide or not by a qualified electrician.

IMPORTANT SAFEGUARDS

When using electrical equipment, basic safety precautions should always be followed including the following:

READ AND FOLLOW ALL SAFETY INSTRUCTIONS

1. DANGER – RISK OF SHOCK – DISCONNECT POWER BEFORE INSTALLATION
2. WARNING – Risk of fire or electric shock. LED Upgrade Kit installation requires knowledge of luminaires electrical systems. If not qualified, do not attempt installation. Product must be installed in accordance with NEC or your local electrical code. If you are not familiar with these codes and requirements, contact a qualified electrician.
3. WARNING – Risk of fire or electric shock. Luminaire wiring and electrical parts may be damaged when drilling for installation of the LED upgrade kit. Check for enclosed wiring and components.
4. WARNING – Risk of fire or electric shock. Check the existing wiring for damage before installing upgrade kit. Do not install if existing wires are damaged.
5. WARNING – To prevent wiring damage or abrasion, do not expose wires to the edge of sheet metal or any other sharp objects.
6. WARNING – Risk of fire or electric shock. Install this kit only in the luminaires that have the construction features and dimensions shown in the photographs and/or drawings.
7. The retrofit assembly is accepted as a component of a luminaire where the suitability of the combination shall be determined by UL or authorities having jurisdiction.
8. Only the holes indicated in the photographs or drawings may be made or altered as a result of the kit installation. Do not leave any other holes open in a wiring enclosure or electrical component.

SAVE THESE INSTRUCTIONS FOR FUTURE REFERENCE NOTES:

1. Upgrade Kit is for installation in a common 4' or 8' dry or damp location fluorescent strip fixture. The luminaire shall have the following minimum dimensions:

- 2" deep pan
- 3" wide minimum wiring compartment
- 46" minimum length to accommodate 4' nominal length light bar and 22" minimum length to accommodate 2' nominal length light bar

2. Consult your local authority regarding disposal or recycling of removed ballast and lamps.

LIST OF SUPPLIED COMPONENTS:

URS Light Bar(s) per Chosen Kit

LED Drivers(s) as Ordered

Self-Tapping Screws: 2 per Bar and 2 per Driver

Optional: New Channel Covers

LIST OF ITEMS INSTALLER MAY HAVE TO SUPPLY:

Additional wire to extend wire length or make jumpers

Wire nuts

Extra self-tapping screws

NOTE: The instructions below reflect the steps necessary for retrofit of a typical fluorescent strip luminaire.

Step 1: Remove the existing linear fluorescent tubes and properly dispose of them.



Step 2: Remove the channel covers to expose the fluorescent ballast(s). Set aside.



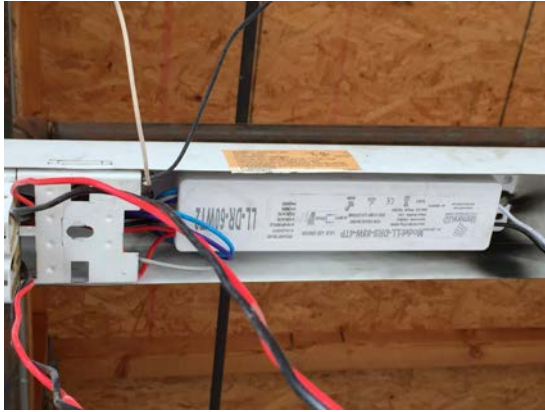
Step 3: Cut the leads from the ballast to the socket housing on both ends of the luminaire and cap socket leads. When cutting the leads, leave the smallest amount of wire attached to the luminaire. Or, completely removed the sockets and wiring. Installer's choice. If the new URS Light Bar is to mount where sockets are located, the sockets will have to be removed.

Step 4: Cut the leads from the ballast to the input power ensuring to leave as much length as possible for electrical connections. Remove ballast from housing and dispose of properly.

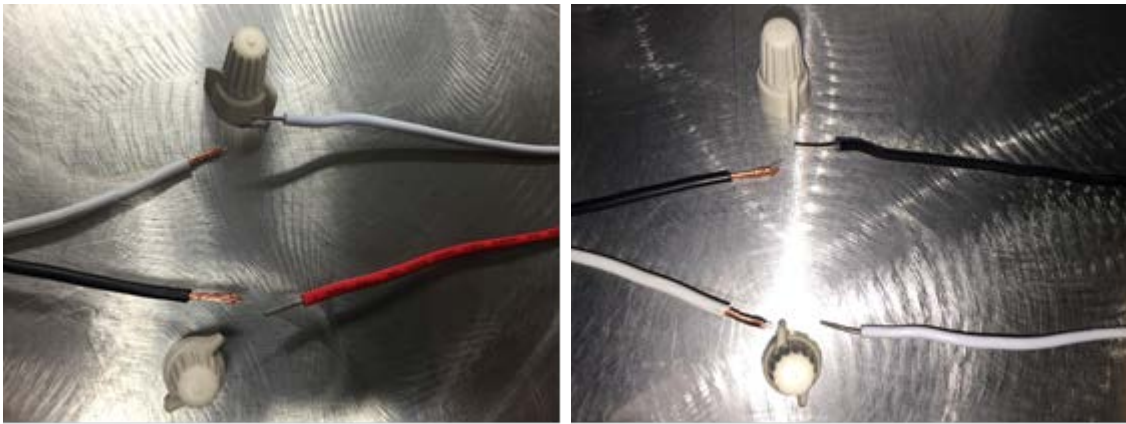
Step 5: Push exposed socket leads back into socket housing on each side of the luminaire or cap any exposed accessible leads.

Step 6: Prepare input power by stripping input power leads 5/8".

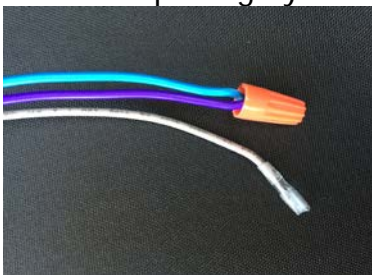
Step 7: Bring new driver into channel using mounting holes from old ballast when possible and secure it using supplied self-tapping screws. Ensure that the existing luminaire channel is properly grounded to ensure proper driver grounding. If housing has multiple locations for power supply, new driver can be secured in any of these locations.



Step 8: Make the input electrical connection per diagram on the face of the LED Driver. The White Input Wire is the Neutral. The Black or Red Input Wire is Line Voltage Input from 100 – 277 Volts. Ensure that the driver is properly grounded to the luminaire.



Step 9: The LED Driver comes standard with 0-10 Volt Dimming. The Blue, Purple, and Grey wires on the output side of the driver are for dimming functions. If the dimming functions will NOT be used, tie the blue and purple wires together with a wire nut and cap the grey dimming wire.



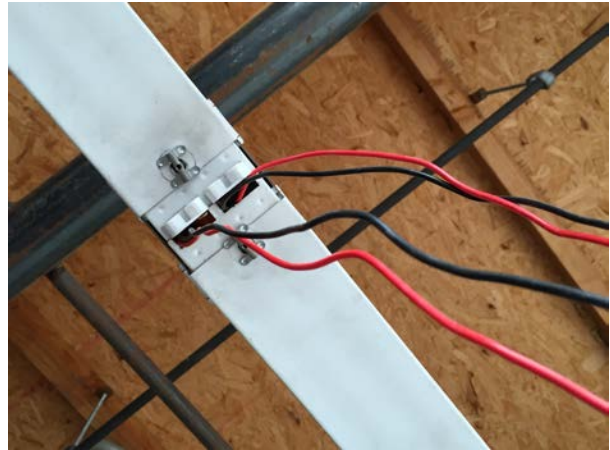
If the dimming functions will be used, this is the function of the dimming wires:

Purple: 0-10V + Dimming Input

Grey: 0-10V – Dimming Input

Blue: Input Power Supply for Dimmer at 9 Volts (when required by dimming system). If not required, cap this wire.

Step 10: Bring channel cover(s) previously removed in Step 2 to the channel. The red and black output leads from the driver need to come through the channel cover(s). Route the driver outgoing leads through a hole drilled in the channel cover with bushing by the installer or the tombstone openings if they were removed allowing leads to be exposed. Reattach channel cover(s) insuring no wires are pinched.

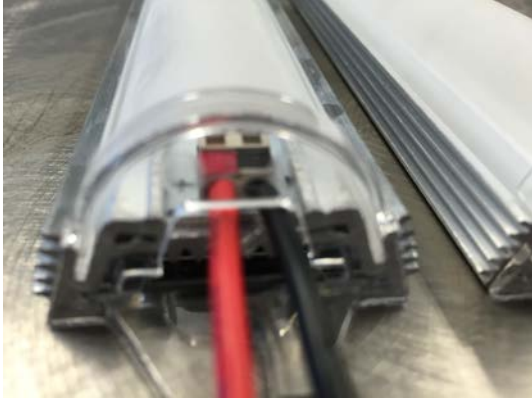


Step 10 Optional: Use new channel cover(s) provided by Linmore LED. Knockouts for driver output wires are provided.

Step 11: Determine where each URS Light Bar will be located on the channel cover. Place the Light Bar against the channel cover. The magnet in the Light Bar End Caps will hold the Light Bar in place until is it mechanically fastened. Start a self-tapping screw for one end of the URS Light Bar. Locate the opposite end of the URS Light Bar and set a self-tapping screw in the chosen location.

Step 12: If necessary, finish installing the remainder of the URS Light Bars in the manner described in Step 11.

Step 13: The URS Light Bars have a press-in style connector on each end visible through the clear end caps. The press-in connectors are both marked by color (red=positive and black=negative) and printed on the LED strip is "+" & "-" indications of the same, respectively.



Step 14: Compact any excess wire lengths under the channel cover.

Step 15: Restore the power supply to the fixture and ensure proper operation.

